

Basic Report



Title: untitled (Lid for columnar eared jar with cinched waist)

Date: 2017

Primary Maker: Anjin Abe

Medium: Stoneware with natural ash



Title: untitled (Columnar eared jar with cinched waist)

Date: 2017

Primary Maker: Anjin Abe

Medium: Stoneware with natural ash



Title: untitled (Three slanted-walled sculpture, MV-155)

Date: 2015

Primary Maker: Yo Akiyama

Medium: Unglazed stoneware



Title: Cormorant Fishing at Nagara River

Date: ca. 1950

Primary Maker: Benji Asada

Medium: Multicolor woodblock print



Title: Snow at Yasaka in Kyoto

Primary Maker: Benji Asada

Medium: Woodblock print on paper

Title: Stand on the Snow Gorge

Primary Maker: Umetaro Azechi

Medium: Color woodcut on paper

Title: Flowers

Date: n.d.

Primary Maker: Yamanoto Baiitsu

Medium: Sumi On Silk

Title: Sumie Zenga

Date: 1800

Primary Maker: Biyakuan

Medium: Brush And Ink On Cloth Mounted On Silk Tapestry backed w/ Rice Paper

Title: Wild Geese Flying Down on Rice Field after Cropping

Date: 18th century

Primary Maker: Ippitsusai Buncho

Medium: Color woodblock print on paper

Title: Butterflies

Date: 1840

Primary Maker: Tani Buncho

Medium: Sumi with color on linen



Title: Monroe/Bardot

Date: 2009

Primary Maker: Alex Guofeng Cao

Medium: C print mounted on aluminum mounted on Plexiglas

Title: Japanese

Landscape

Primary Maker: Pervez Captain

Medium: Etching on paper

Title: Sea Bloom

Primary Maker: Pervez Captain

Medium: Color etching on paper



Title: Naomi Wang's Anniversary

Date: 2006

Primary Maker: Yi Chen

Medium: Oil on canvas

Title: Arashiyama in West Kyoto, from Beauties at Famous Places

Date: 1890

Primary Maker: Yoshu Chikanobu

Medium: Color woodblock on laid paper

Title: Seven Mile Beach in Sagami Province

Date: 1890

Primary Maker: Yoshu Chikanobu

Medium: Color woodblock on laid Japan paper

Title: Walking Horse

Date: 206 B.C.- 220 A.D.

Primary Maker: (Han dynasty, 206 B.C.- 220 A.D.) Chinese

Medium: Terra cotta (low temperature-fired earthenware)

Title: Walking Horse

Date: 206 B.C. - 220 A.D.

Primary Maker: (Han dynasty, 206 B.C.- 220 A.D.) Chinese

Medium: Terra cotta (low temperature-fired earthenware)



Title: Wild Cherry and Owl
Primary Maker: Kotozuka Eiichi
Medium: Color woodblock on paper

Title: O-Man at Riverside of Sanjo
Primary Maker: Rekisentei (Chkysai) Eiri
Medium: Color woodblock on paper

Title: Ducks and Full Moon
Primary Maker: Keisai Eisen
Medium: Color woodblock on paper

Title: Shinkiso (The melancholy type), from the series Imayo bijin junikei (Twelve Scenes of Modern Beauties)
Primary Maker: Keisai Eisen
Medium: Color woodblock facimile on paper



Title: Itsutomi
Date: 1794
Primary Maker: Chobunsai Eishi
Medium: Multicolor woodblock print

Title: Parrot Komachi, From "Furyu Nana Komachi"
Primary Maker: Chobunsai Eishi
Medium: Color woodblock on paper

Title: Hano-Ogi of Ogi-Ya
Primary Maker: Chokosai Eisho
Medium: Color woodblock on paper

Title: The Courtesan Yosooi of Matsubaya
Primary Maker: Ichirakusai Eisui
Medium: Color woodblock on paper

Title: The Actor Nakamura Nakazo as Matsuomaru
Date: 1796
Primary Maker: Kabukioo Enkyo
Medium: Color woodblock facsimile on paper

Title: Reading a Book in the Mountains

Primary Maker: Izuno Gizan

Medium: Woodcut on rice paper

Title: Alone On a Cold Snowy Lake

Primary Maker: Izuno Gizan

Medium: Color woodblock on paper

Title: Cold Light and Snowy Peaks

Primary Maker: Izuno Gizan

Medium: Color woodblock on paper

Title: Visiting Friends by Lakes and Mountains

Primary Maker: Izuno Gizan

Medium: Color woodblock on paper



Title: Study of Monkeys

Date: 19th Century

Primary Maker: Kawanabe Gyosai

Medium: Ink on Japan rice paper



Title: Lions

Date: 19th Century

Primary Maker: Kawanabe Gyosai

Medium: Ink on Japan rice paper

Title: Ryugu Urashima

Date: 19th Century

Primary Maker: Kawanabe Gyosai

Medium: Ink on thin Japan paper

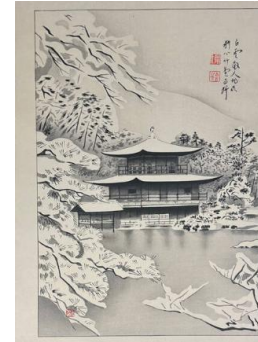


Title: Bear Carrying a Horse

Date: 19th Century

Primary Maker: Kawanabe Gyosai

Medium: Ink on Japan rice paper



Title: Temple In Snow

Date: 1975

Primary Maker: Takasu Hakuun

Medium: Woodblock on paper



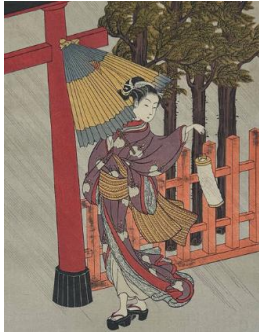
Title: Miyuhiki
Date: 1999
Primary Maker: Katsunori Hamanishi
Medium: Mezzotint on cream wove paper



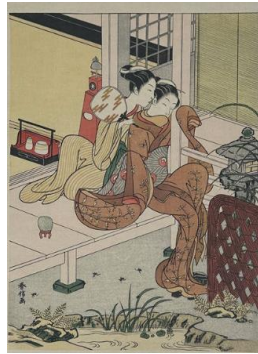
Title: Fawn (3 leaping fawns)
Date: 2007
Primary Maker: Midori Harima
Medium: Xerox copy on archival paper, methyl cellulose paste, archival tape, in three parts



Title: Mitate Kikujido
Primary Maker: Suzuki Harunobu



Title: Osen at Kasamori Shrine
Primary Maker: Suzuki Harunobu
Medium: Color woodblock facsimile on paper



Title: Untitled
Primary Maker: Suzuki Harunobu
Medium: Color woodblock on paper, 20th century facsimile



Title: Crow and Heron
Date: 1764-72
Primary Maker: Suzuki Harunobu
Medium: Multicolor woodblock print



Title: Couple Catching Fireflies
Date: 1769
Primary Maker: Suzuki Harunobu
Medium: Multicolor woodblock print



Title: Kiyomisu, from Fuyu Nana Komachi, Seven Elegant Komachis
Primary Maker: Suzuki Harushige
Medium: Color woodblock on paper



Title: untitled (Tear drop shaped sculpture with iridescent glaze, metal-like finish)
Date: 2020
Primary Maker: Tomonari Hashimoto
Medium: Shaped metal



Title: Cryptomeria Avenue, Nikko

Date: 1930

Primary Maker: Kawase Hasui

Medium: Multicolor woodblock print on Japan rice paper



Title: The Area of Black

Date: 2002

Primary Maker: ITABASHI

Hiromi

Medium: Chuku (black chamotte-encrusted ceramic)



Title: Bust Portrait Of A Kabuki Actor From The Series Chuko Buyuden

Date: 1848

Primary Maker: Konishi Hiroshige

Medium: Color woodblock on paper



Title: Sunshower at Nihonbashi

Date: 1833-34

Primary Maker: Utagawa Hiroshige

Medium: Multicolor woodblock print

Title: Ichikoku Bridge in the Eastern Capital, from Thirty-Six Views of Mt. Fuji

Date: 1858

Primary Maker: Utagawa Hiroshige

Medium: Color woodblock on paper (facsimile)

Title: Totsuka, Plate 6 from Famous Places on the Fifty-Three Stations, or The Vertical Tokaido

Date: 1855

Primary Maker: Utagawa Hiroshige

Medium: Color woodblock on paper



Title: Mt. Fuji from the Suruga District in the Eastern Capital, Plate 2 from the series Thirty-Six Views of Mt. Fuji

Date: 1858

Primary Maker: Utagawa Hiroshige

Medium: Multicolor woodblock print

Title: Noge and Yokohama in Musashi Province, from Thirty-six Views of Mt. Fuji

Date: 1858

Primary Maker: Utagawa Hiroshige

Medium: Color woodblock on paper (facsimile)



Title: The i River between Suruga and Totomi Provinces, from Thirty-six Views of Mt. Fuji

Date: 1858

Primary Maker: Utagawa Hiroshige

Medium: Color woodblock on paper (facsimile)



Title: Kanbara, from The Fifty-three Stations of the Tkaid

Date: 1833-1834

Primary Maker: Utagawa Hiroshige

Medium: Color woodblock on paper (facsimile)



Title: Twilight Hill at Meguro in the Eastern Capital, from Thirty-six Views of Mt. Fuji

Date: 1858

Primary Maker: Utagawa Hiroshige

Medium: Color woodblock on paper (facsimile)

Title: Futagawa, Plate 34 from Famous Places on the Fifty-Three Stations, or The Vertical Tokaido

Date: 1855

Primary Maker: Utagawa Hiroshige

Medium: Color woodblock on paper

Title: Otsu, Plate 54 from Famous Places on the Fifty-Three Stations, or The Vertical Tokaido

Date: 1855

Primary Maker: Utagawa Hiroshige

Medium: Color woodblock on paper



Title: The Sumida Embankment in the Eastern Capital, from Thirty-six Views of Mt. Fuji

Date: 1858

Primary Maker: Utagawa Hiroshige

Medium: Color woodblock on paper (facsimile)



Title: Mt. Asuka in the Eastern Capital, from Thirty-six Views of Mt. Fuji

Date: 1858

Primary Maker: Utagawa Hiroshige

Medium: Color woodblock on paper (facsimile)



Title: The Sagami River, from Thirty-six Views of Mt. Fuji

Date: 1858

Primary Maker: Utagawa Hiroshige

Medium: Color woodblock on paper (facsimile)

Title: Shirasuka, Plate 33 from Famous Places on the Fifty-Three Stations, or The Vertical Tokaido

Date: 1855

Primary Maker: Utagawa Hiroshige

Medium: Color woodblock on paper



Title: Nihonbashi and Edobashi Bridges, from Yaruadaye Figure Set

Date: 1853

Primary Maker: Utagawa Hiroshige

Medium: Color woodblock on paper



Title: The Entrance Gate at Enoshima in Sagami Province, from Thirty-six Views of Mt. Fuji

Date: 1858

Primary Maker: Utagawa Hiroshige

Medium: Color woodblock on paper (facsimile)



Title: Wild Goose Hill and the Tone River, from Thirty-six Views of Mt. Fuji

Date: 1858

Primary Maker: Utagawa Hiroshige

Medium: Color woodblock on paper (facsimile)

Title: Tsuchiyama, Plate 50 from Famous Places on the Fifty-Three Stations, or The Vertical Tokaido

Date: 1855

Primary Maker: Utagawa Hiroshige

Medium: Color woodblock on paper



Title: Lake at Hakone, from Thirty-six Views of Mt. Fuji

Date: 1858

Primary Maker: Utagawa Hiroshige

Medium: Color woodblock on paper (facsimile)

Title: Cherry Blossoms at Honmoku in Musashi Province, from Thirty-six Views of Mt. Fuji

Date: 1858

Primary Maker: Utagawa Hiroshige

Medium: Color woodblock on paper (facsimile)

Title: Shono, Plate 46 from Famous Places on the Fifty-Three Stations, or The Vertical Tokaido

Date: 1855

Primary Maker: Utagawa Hiroshige

Medium: Color woodblock on paper



Title: The Road Below the Rakan Temple in Buzen Province, from the series Pictures of Famous Places in the Sixty-odd Provinces

Date: 1854

Primary Maker: Utagawa Hiroshige

Medium: Multicolor woodblock print

Title: Kyoto, Plate 55 from Famous Places on the Fifty-Three Stations, or The Vertical Tokaido

Date: 1855

Primary Maker: Utagawa Hiroshige

Medium: Color woodblock on paper

Title: Fujisawa, Plate 7 from Famous Places on The Fifty-Three Stations, or The Vertical Tokaido

Date: 1855

Primary Maker: Utagawa Hiroshige

Medium: Color woodblock on paper

Title: The tsuki Plain in Kai Province, from Thirty-six Views of Mt. Fuji

Date: 1858

Primary Maker: Utagawa Hiroshige

Medium: Color woodblock on paper (facsimile)

Title: Ishike, Plate 52 from Famous Places on the Fifty-Three Stations, or The Vertical Tokaido

Date: 1855

Primary Maker: Utagawa Hiroshige

Medium: Color woodblock on paper

Title: Numazu, Plate 13 from Famous Places on the Fifty-Three Stations, or The Vertical Tokaido

Date: 1855

Primary Maker: Utagawa Hiroshige

Medium: Color woodblock on paper



Title: Fugaku Sanjurokkei, title page from Thirty-six Views of Mt. Fuji

Primary Maker: Utagawa Hiroshige

Medium: Color woodblock on paper



Title: Narumi, Plate 41 from Famous Places on the Fifty-Three Stations, or The Vertical Tokaido

Date: 1855

Primary Maker: Utagawa Hiroshige

Medium: Color woodblock on paper

Title: Futami Bay in Ise Province, from Thirty-six Views of Mt. Fuji

Date: 1858

Primary Maker: Utagawa Hiroshige

Medium: Color woodblock on paper (facsimile)

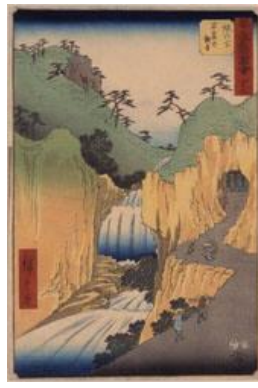


Title: Kuroto Bay in Kazusa Province, from Thirty-six Views of Mt. Fuji

Date: 1858

Primary Maker: Utagawa Hiroshige

Medium: Color woodblock on paper (facsimile)



Title: Hakone, Plate 11 from Famous Places on the Fifty-Three Stations, or The Vertical Tokaido

Date: 1855

Primary Maker: Utagawa Hiroshige

Medium: Color woodblock on paper

Title: Okazaki, Plate 39 from Famous Places on the Fifty-Three Stations, or The Vertical Tokaido

Date: 1855

Primary Maker: Utagawa Hiroshige

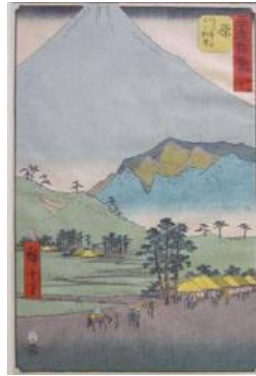
Medium: Color woodblock on paper

Title: Nihonbashi, Plate 1 from Famous Places on the Fifty-Three Stations, or The Vertical Tokaido

Date: 1855

Primary Maker: Utagawa Hiroshige

Medium: Color woodblock on paper



Title: Hara, Plate 14 from Famous Places on the Fifty-Three Stations, or The Vertical Tokaido

Date: 1855

Primary Maker: Utagawa Hiroshige

Medium: Color woodblock on paper



Title: Dog Eye Pass in Kai Province, from Thirty-six Views of Mt. Fuji

Date: 1858

Primary Maker: Utagawa Hiroshige

Medium: Color woodblock on paper (facsimile)

Title: Shinagawa, Plate 2 from Famous Places on the Fifty-Three Stations, or The Vertical Tokaido

Date: 1855

Primary Maker: Utagawa Hiroshige

Medium: Color woodblock on paper

Title: Kameyama, Plate 47 from Famous Places on the Fifty-Three Stations, or The Vertical Tokaido

Date: 1855

Primary Maker: Utagawa Hiroshige

Medium: Color woodblock on paper

Title: Yoshida, Plate 35 from Famous Places on the Fifty-Three Stations, or The Vertical Tokaido

Date: 1855

Primary Maker: Utagawa Hiroshige

Medium: Color woodblock on paper

Title: Minaguchi, Plate 51 from Famous Places on the Fifty-Three Stations, or The Vertical Tokaido

Date: 1855

Primary Maker: Utagawa Hiroshige

Medium: Color woodblock on paper

Title: Hiratsuka, Plate 8 from Famous Places on the Fifty-Three Stations, or The Vertical Tokaido

Date: 1855

Primary Maker: Utagawa Hiroshige

Medium: Color woodblock on paper



Title: Sukiya-gashi in the Eastern Capital, from Thirty-Six Views of Mt. Fuji

Date: 1858

Primary Maker: Utagawa Hiroshige

Medium: Color woodblock on paper (facsimile)



Title: Shiojiri Pass in Shinano Province, from Thirty-six Views of Mt. Fuji
Date: 1858
Primary Maker: Utagawa Hiroshige
Medium: Color woodblock on paper (facsimile)



Title: The Izu Mountains, from Thirty-six Views of Mt. Fuji
Date: 1858
Primary Maker: Utagawa Hiroshige
Medium: Color woodblock on paper (facsimile)



Title: Koshigaya in Musashi Province, from Thirty-six Views of Mt. Fuji
Date: 1858
Primary Maker: Utagawa Hiroshige
Medium: Color woodblock on paper (facsimile)



Title: Priests in Kii Province (fragment from a Harimaze sheet illustrating the provinces of Japan)
Primary Maker: Utagawa Hiroshige
Medium: Color woodblock on paper

Title: Odawara, Plate 10 from Famous Places on the Fifty-Three Stations or The Vertical Tokaido
Date: 1855
Primary Maker: Utagawa Hiroshige
Medium: Color woodblock print on paper

Title: Kanagawa, Plate 4 from Famous Places on the Fifty-Three Stations, or The Vertical Tokaido
Date: 1855
Primary Maker: Utagawa Hiroshige
Medium: Color woodblock on paper



Title: The Eastern Temple at Asakusa, from Famous Places In Edo or The Yamadaya Set
Date: 1854
Primary Maker: Utagawa Hiroshige
Medium: Color woodblock print on paper

Title: Nihonbashi, Plate 1 from Famous Places on the Fifty-Three Stations, or The Vertical Tokaido
Date: 1855
Primary Maker: Utagawa Hiroshige
Medium: Color woodblock on paper



Title: Chiryu, Plate 40 from Famous Places on the Fifty-Three Stations, or The Vertical Tokaido
Date: 1855
Primary Maker: Utagawa Hiroshige
Medium: Color woodblock on paper

Title: Arai, Plate 32 from Famous Places on the Fifty-Three Stations, or The Vertical Tokaido

Date: 1855

Primary Maker: Utagawa Hiroshige

Medium: Color woodblock on paper

Title: Ferry Boat at Kuwana, Plate 43 from Famous Places on the Fifty-Three Stations, or The Vertical Tokaido

Date: 1855

Primary Maker: Utagawa Hiroshige

Medium: Color woodblock on paper



Title: Kogane Plain in Shimsa Province, from Thirty-six View of Mt. Fuji

Date: 1858

Primary Maker: Utagawa Hiroshige

Medium: Multicolor woodblock print

Title: Hodogaya, Plate 5 from Famous Places on the Fifty-Three Stations, or The Vertical Tokaido

Date: 1855

Primary Maker: Utagawa Hiroshige

Medium: Color woodblock on paper

Title: Okabe, Plate 22 from Famous Places on the Fifty-Three Stations, or The Vertical Tokaido

Date: 1855

Primary Maker: Utagawa Hiroshige

Medium: Color woodblock on paper

Title: Yui, Plate 17 from Famous Places on the Fifty-Three Stations, or The Vertical Tokaido

Date: 1855

Primary Maker: Utagawa Hiroshige

Medium: Color woodblock on paper

Title: Kawazaki, Plate 3 from Famous Places on the Fifty-Three Stations, or The Vertical Tokaido

Date: 1855

Primary Maker: Utagawa Hiroshige

Medium: Color woodblock on paper



Title: Fujikawa, Plate 38 from Famous Places on the Fifty-Three Stations, or The Vertical Tokaido

Date: 1855

Primary Maker: Utagawa Hiroshige

Medium: Color woodblock on paper

Title: Kambara, Plate 16 from Famous Places on the Fifty-Three Stations, or The Vertical Tokaido

Date: 1855

Primary Maker: Utagawa Hiroshige

Medium: Color woodblock on paper

Title: Yokkaichi, Plate 44 from Famous Places on the Fifty-Three Stations, or The Vertical Tokaido

Date: 1855

Primary Maker: Utagawa Hiroshige

Medium: Color woodblock on paper

Title: Ejiri, Plate 19 from Famous Places on the Fifty-Three Stations, or The Vertical Tokaido

Date: 1855

Primary Maker: Utagawa Hiroshige

Medium: Color woodblock on paper

Title: Nissaka, Plate 26 from Famous Places on the Fifty-Three Stations, or The Vertical Tokaido

Date: 1855

Primary Maker: Utagawa Hiroshige

Medium: Color woodblock on paper

Title: Miya, Plate 42 from Famous Places on the Fifty-Three Stations, or The Vertical Tokaido

Date: 1855

Primary Maker: Utagawa Hiroshige

Medium: Color woodblock on paper



Title: The Pine Forest of Miho in Suruga Province, from Thirty-six Views of Mt. Fuji

Date: 1858

Primary Maker: Utagawa Hiroshige

Medium: Color woodblock on paper (facsimile)



Title: The Teahouse with the View of Mt. Fuji from Zshigaya, from the series Thirty-six Views of Mt. Fuji

Date: 1858

Primary Maker: Utagawa Hiroshige

Medium: Multicolor woodblock print



Title: The Hotohoto Festival at the Great Shrine in Izumo Province, from Famous Views of the 60-odd Provinces

Provinces

Primary Maker: Utagawa Hiroshige

Medium: Color woodblock on paper

Title: Mitsuke, Plate 29 from Famous Places on the Fifty-Three Stations, or The Vertical Tokaido

Date: 1855

Primary Maker: Utagawa Hiroshige

Medium: Color woodblock on paper



Title: Rygoku in the Eastern Capital, from Thirty-six Views of Mt. Fuji

Date: 1858

Primary Maker: Utagawa Hiroshige

Medium: Color woodblock on paper (facsimile)

Title: The Sea Off the Miura Peninsula in Sagami Province, from Thirty-six Views of Mt. Fuji

Date: 1858

Primary Maker: Utagawa Hiroshige

Medium: Color woodblock on paper (facsimile)

Title: Ishiyakushi, Plate 45 from Famous Places on the Fifty-Three Stations, or The Vertical Tokaido

Date: 1855

Primary Maker: Utagawa Hiroshige

Medium: Color woodblock on paper

Title: Oiso, Plate 9 from Famous Places on the Fifty-Three Stations, or The Vertical Tokaido

Date: 1855

Primary Maker: Utagawa Hiroshige

Medium: Color woodblock on paper

Title: Hamamatsu, Plate 30 from Famous Places on the Fifty-Three Stations, or The Vertical Tokaido

Date: 1855

Primary Maker: Utagawa Hiroshige

Medium: Color woodblock on paper

Title: Mishima, Plate 12 from Famous Places on the Fifty-Three Stations, or The Vertical Tokaido

Date: 1855

Primary Maker: Utagawa Hiroshige

Medium: Color woodblock on paper

Title: Shimada, Plate 24 from Famous Places on the Fifty-Three Stations, or The Vertical Tokaido

Date: 1855

Primary Maker: Utagawa Hiroshige

Medium: Color woodblock on paper



Title: Evening Moon at Ryogoku, from Famous Places in Edo

Primary Maker: Utagawa Hiroshige

Medium: Color woodblock print on paper, 20th century facsimile

Title: Okitsu, Plate 18 from Famous Places on the Fifty-Three Stations, or The Vertical Tokaido

Date: 1855

Primary Maker: Utagawa Hiroshige

Medium: Color woodblock on paper



Title: Off Tsukuda Island in the Eastern Capital, from Thirty-six Views of Mt. Fuji

Date: 1858

Primary Maker: Utagawa Hiroshige

Medium: Multicolor woodblock print



Title: Ochanomizu in the Eastern Capital, from Thirty-six Views of Mt. Fuji

Date: 1858

Primary Maker: Utagawa Hiroshige

Medium: Color woodblock on paper (facsimile)

Title: Mt. Kan in Kazusa Province, from Thirty-six Views of Mt. Fuji

Date: 1858

Primary Maker: Utagawa Hiroshige

Medium: Color woodblock on paper (facsimile)



Title: The Seven Ri Beach in Sagami Province, from Thirty-six Views of Mt. Fuji

Date: 1858

Primary Maker: Utagawa Hiroshige

Medium: Color woodblock on paper (facsimile)



Title: The Sea off Satta in Suruga Province, from Thirty-six Views of Mt. Fuji

Date: 1858

Primary Maker: Utagawa Hiroshige

Medium: Color woodblock on paper (facsimile)

Title: Ishiyakushi, Plate 45 from Famous Places on the Fifty-Three Stations, or The Vertical Tokaido

Date: 1855

Primary Maker: Utagawa Hiroshige

Medium: Color woodblock on paper

Title: Fuchu, Plate 20 from Famous Places on the Fifty-Three Stations, or The Vertical Tokaido

Date: 1855

Primary Maker: Utagawa Hiroshige

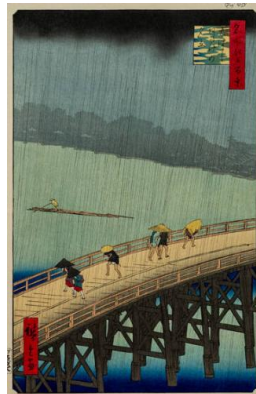
Medium: Color woodblock on paper

Title: Akasaka, from The Fifty-three Stations of the Tkaid

Date: 1832

Primary Maker: Utagawa Hiroshige

Medium: Woodblock color print



Title: Summer Shower at Ohashi Bridge, from One Hundred Views of Edo

Primary Maker: Utagawa Hiroshige

Medium: Color woodblock on paper (facsimile)



Title: Fuji on the left of the Tkaid Road, from Thirty-six Views of Mt. Fuji

Date: 1858

Primary Maker: Utagawa Hiroshige

Medium: Color woodblock on paper

Title: Mariko, Plate 21
from Famous Places on
the Fifty-Three Stations,
or The Vertical Tokaido

Date: 1855

Primary Maker: Utagawa
Hiroshige

Medium: Color woodblock on
paper



Title: Senba Station,
Plate 32 from the series
Sixty-Nine Stations of
the Kisokaido

Date: c. 1835-48

Primary Maker: Utagawa
Hiroshige

Medium: Color woodblock on
paper (fascimile)

Title: Maizaka, Plate 31
from Famous Places on
the Fifty-Three Stations,
or The Vertical Tokaido

Date: 1855

Primary Maker: Utagawa
Hiroshige

Medium: Color woodblock on
paper



Title: Peony

Date: 1930

Primary Maker: Hodo

Medium: Color woodblock on
paper



Title: Chrysanthemum

Date: 0-1930

Primary Maker: Hodo

Medium: Woodblock on paper



Title: Fuji from
Enoshima

Primary Maker: Totoya Hokkei

Medium: Color woodblock on
paper



Title: Fujimi Fuji view
field in Owari Province,
from the series Thirty-
Six Views of Mount Fuji
(Fugaku sanjrokkei)

Primary Maker: Katsushika
Hokusai

Medium: Color woodblock on
paper



Title: The Red Fuji

Primary Maker: Katsushika
Hokusai

Medium: Color woodblock
print on paper

Title: Couple with Horse
by Hachiman Shrine

Date: c. 1810

Primary Maker: Katsushika
Hokusai

Medium: Color woodblock on
Japan paper



Title: The Flower Shell -
from A Series of Shells
Primary Maker: Katsushika
Hokusai
Medium: Color woodblock print



Title: Night Fishing in
Kai Province (Chie No
Umi Series)
Primary Maker: Katsushika
Hokusai
Medium: Color woodblock on
paper, 20th century facsimile



Title: Lilies
Primary Maker: Katsushika
Hokusai
Medium: Color woodblock on
paper



Title: South Wind, Clear
Sky, also known as Red
Fuji, from Thirty-six
Views of Mount Fuji
Date: ca. 1830-32
Primary Maker: Katsushika
Hokusai
Medium: Multicolor woodblock
print



Title: Hydrangea and
Swallow (from an
unnamed series of
kacho-e)
Date: ca. 1833-34
Primary Maker: Katsushika
Hokusai
Medium: Multicolor woodblock
print



Title: The Great Wave off
Kanagawa, from the
series Thirty-Six Views of
Mt. Fuji
Date: ca. 1829-32
Primary Maker: Katsushika
Hokusai
Medium: Multicolor woodblock
print

Title: Kataska Niza Emo
as Ashima Sabuio and
Arashi Kitsusaburo as a
Courtier Holding a Key
Date: 19th Century
Primary Maker: Hokushu
Medium: Ink on paper (diptych)

Title: Arashi
Kitsusaburo II as
Minamoto No Yorimasa
Date: 19th Century
Primary Maker: Hokushu
Medium: Ink on Japan rice
paper



Title: Rosebud Sign
Primary Maker: Kamiya Hoshu
Medium: Woodblock on laid
Japan paper



Title: Man And Woman
#24
Date: 1960-1988
Primary Maker: Eikoh Hosoe
Medium: Gelatin silver print



Title: Untitled
Date: n. d.
Primary Maker: Kyu Baik
Hwang
Medium: Color lithograph on
paper



Title: Flowers Of Stars
Date: 1975
Primary Maker: Shuzo Ikeda
Medium: woodcut



Title: Peasants
Harvesting Rice
Date: 1868
Primary Maker: Shsai Ikkei
Medium: Multicolor woodblock
print



Title: Ninnaji Temple
Gate in Snow
Primary Maker: Nisaburo Ito
Medium: Color woodblock on
paper



Title: Temple of the
Golden Pavilion
Primary Maker: Nisaburo Ito
Medium: Color woodblock on
paper



Title: untitled (Rounded
sculpture with circular
opening)
Date: 2007
Primary Maker: Tadashi Ito
Medium: Stoneware



Title: Woman in Kimono
with Design of Raincoat
and Hat
Primary Maker: Kaigetsud
Doshin
Medium: Color woodblock
print on paper



Title: Woman in Kimono
of Mill Design
Primary Maker: Kaigetsud
Doshin
Medium: Woodblock print on
laid paper



Title: A Saint
Date: 1892
Primary Maker: Kansai
Medium: Color woodblock on japan laid paper



Title: Horse pulling sled
Date: 1950s
Primary Maker: Kaoru Kawano
Medium: Color woodblock on paper



Title: Winter Evening
Date: 1975
Primary Maker: Shiro Kasamatsu
Medium: Woodblock print on paper



Title: Fireworks
Date: c. 1975
Primary Maker: Shiro Kasamatsu
Medium: Woodblock print on paper



Title: Oribe Mizusashi (Oribe - glazed water jar) (Water jar (mizuhashi))
Date: 2009
Primary Maker: Yasukage Kato
Medium: Stoneware with green and brown oribe glaze



Title: Lid for Oribe Mizusashi (Oribe - glazed water jar) (Lid for water jar (mizuhashi))
Date: 2009
Primary Maker: Yasukage Kato
Medium: Stoneware with green and brown oribe glaze



Title: untitled (Sculpture in the form of a pumpkin)
Date: 2015
Primary Maker: Chieko Katsumata
Medium: Stoneware with red matte glaze



Title: untitled (Geometric vase with painted pattern)
Date: n.d.
Primary Maker: Kanjiro Kawai
Medium: Glazed stoneware

Title: The Water Lily Season
Date: 1959
Primary Maker: Hide Kawanishi
Medium: Color woodcut on wove paper



Title: Pink Lotus
Date: 1970
Primary Maker: Shodo Kawarazaki
Medium: Woodblock on laid paper



Title: Touch-Me-Not
Primary Maker: Shodo Kawarazaki
Medium: Color woodblock on rice paper



Title: Yellow Chrysanthemum
Primary Maker: Shodo Kawarazaki
Medium: Color woodblock on rice paper



Title: White Lotus
Date: 1970
Primary Maker: Shodo Kawarazaki
Medium: Woodblock on laid paper



Title: Buckwheat, Water Pepper and Quail, from Keinen Kacho Gafu
Date: 1891-1892
Primary Maker: Imao Keinen
Medium: Woodblock print on paper



Title: Fir and Cuckoo, from Keinen Kacho Gafu
Date: 1891-1892
Primary Maker: Imao Keinen
Medium: Woodblock print on paper



Title: Shadows Crossing
Date: 2019
Primary Maker: SUGITANI Keizo
Medium: Unglazed stoneware

Title: Oni Saying The Nembutsu
Date: n.d.
Primary Maker: Kibutsu
Medium: Otsu-e in henna, black, white, and sulfur



Title: Oroshi: Mountain Gust
Date: 2016
Primary Maker: Satoshi Kino
Medium: Porcelain with celadon glaze

Title: Enfant

Date: 1964

Primary Maker: Akira Kito

Medium: Color lithograph on paper



Title: Beauties

**Composing Poems and
Examining Samples of
Family Crests**

Date: ca. 1750

Primary Maker: Torii Kiyohiro

Medium: Multicolor woodblock print



Title: Ohisa of

Takashimaya

Primary Maker: Torii Kiyomasa

Medium: Color woodblock on paper

**Title: Actor Ichikawa
Danjuro I as Suga Goro
(Pulling Bamboo)**

Primary Maker: Torii Kiyomasu

Medium: Color woodblock on paper



**Title: Gyozya Busho
About To Slay A Tiger
(From The Series, "108
Heroes Of The Suikoden)**

Date: 1760

Primary Maker: Torii

Kiyomitsu I

Medium: Woodblock in three colors on laid paper



Title: Bath House

Primary Maker: Torii

Kiyomitsu I

Medium: Color woodblock on paper



Title: The Peacock
Primary Maker: Torii Kiyomitsu
Medium: Color woodblock on paper



Title: Actor Nakamura Tomi Juro as the Poetess Ono No Ko
Primary Maker: Torii Kiyomitsu
Medium: Color woodblock on paper



Title: Actor Ichikawa Raizo as Sukeroku
Primary Maker: Torii Kiyomitsu
Medium: Color woodblock on paper



Title: Women Enjoying Cool Evening by River at Shijo in Kyoto
Date: ca. 1784
Primary Maker: Torii Kiyonaga
Medium: Multicolor woodblock print on paper



Title: Women Enjoying Cool Evening by River Kama at Shijo
Primary Maker: Torii Kiyonaga
Medium: Color woodblock on paper



Title: The Courtesan Wakekusa of Chojiya with her Kamura
Primary Maker: Torii Kiyonaga
Medium: Color woodblock on paper



Title: Under Umbrellas in a Shower, from the series A Brocade of Eastern Manners (Fuzoku Azuma no nishiki)
Date: 1783
Primary Maker: Torii Kiyonaga
Medium: Multicolor woodblock print



Title: Courtesans by a Window
Primary Maker: Torii Kiyonaga
Medium: Color woodblock on paper



Title: Fuzoku Azuma no nishiki (Brocades of the East in Daily Life)
Date: 1783-1784
Primary Maker: Torii Kiyonaga
Medium: Color woodblock on paper (facsimile)

Title: Woman in Kimono Holding a Ground Cherry
Primary Maker: Torii Kiyonobu
Medium: Color woodblock on paper

Title: Woman in Kimono
Primary Maker: Torii Kiyonobu
Medium: Woodblock on paper



Title: Connection No. 1
Date: n. d.
Primary Maker: Masami Kodama
Medium: Black Belgian marble



Title: Courtesan Suminoto of Okanya
Primary Maker: Isoda Koryusai
Medium: Color woodblock on paper



Title: Woman and Her Customer
Primary Maker: Isoda Koryusai
Medium: Color woodblock on paper



Title: Public Bath
Primary Maker: Isoda Koryusai
Medium: Color woodblock on paper



Title: Courtesan With Kamuro
Date: ca. 1865
Primary Maker: Toyohara Kunichika
Medium: Multicolor woodblock print



Title: Scene From Kabuki Drama
Date: ca. 1880
Primary Maker: Toyohara Kunichika
Medium: Multicolor woodblock print



Title: Actor Bando Hikosaburo V As Ichimisai No Musume Osono
Date: 1873
Primary Maker: Toyohara Kunichika
Medium: Color wood block on paper



Title: Scene From Kabuki Drama
Date: ca. 1880
Primary Maker: Toyohara Kunichika
Medium: Multicolor woodblock print



Title: Scene From Kabuki Drama
Date: ca. 1880
Primary Maker: Toyohara Kunichika
Medium: Multicolor woodblock print



Title: Multiple Depictions: Insects, City-Scapes, Bijin
Date: 1880
Primary Maker: Toyohara Kunichika
Medium: Woodblock on paper



Title: The Actor Sawamura Tanosuke as the Courtesan Umeg
Date: 1810s
Primary Maker: Utagawa Kunimaru
Medium: Color woodblock on paper



Title: A Beauty with Cat at Kotatsu
Primary Maker: Utagawa Kunimasa
Medium: Color woodblock on paper

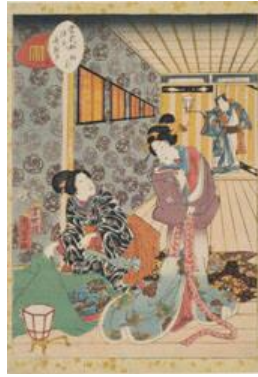
Title: Bound Volume Of Woodblock Prints (24)
Date: n.d.
Primary Maker: Yoshichika & Yoshi Kunisada
Medium: Color woodcut on rice paper- mounted on wove bound in yellow silk volume

Title: Sawarabi

Date: 1857

Primary Maker: Utagawa
Kunisada II

Medium: Color woodblock on
Japan paper



Title: The Paulownia Pavilion (Kiritsubo), from Tales of Genji

Date: 1857

Primary Maker: Utagawa
Kunisada II

Medium: Multicolor woodblock
print



Title: Scene From Kabuki Drama (Triptych)

Date: 1855

Primary Maker: Utagawa
Kunisada II

Medium: Color woodblock print

Title: Act Six of Kanadehon Chushingura

Primary Maker: Utagawa
Kunisada II

Medium: Color woodblock on
paper

Title: Act Seven of Chushingura

Primary Maker: Utagawa
Kunisada II

Medium: Color woodblock on
thin Japan paper

Title: Kato Masakiyo Invading Korea

Primary Maker: Ichiransa
Kunitsuna

Medium: Color woodblock
print on paper



Title: Actor as the Apprentice Chokichi in the play Suda

Primary Maker: Utagawa
Kuniyoshi

Medium: Color woodblock on
paper



Title: Scene of Night Attack from Act II of Chu-Shin-Gura

Date: c. 1820s

Primary Maker: Utagawa
Kuniyoshi

Medium: Color woodblock print

Title: Fox Marriage

Date: 1837-1839

Primary Maker: Utagawa
Kuniyoshi

Medium: Color woodblock on
paper, triptych



Title: Samurai (Warrior In Kabuki Drama)
Date: 1852
Primary Maker: Utagawa Kuniyoshi
Medium: Color woodblock print

Title: Woman and Child (study for a fan print)
Date: 19th Century
Primary Maker: Utagawa Kuniyoshi
Medium: Ink on rice paper



Title: Scenery of the Cloud
Date: 1970
Primary Maker: Kenji Kusaka
Medium: Color woodblock print on paper



Title: Etang au Crepuscule
Primary Maker: Hoi Lebadang
Medium: Lithograph on paper



Title: Untitled
Date: n. d.
Primary Maker: Hoi Lebadang
Medium: color lithograph



Title: Wall-mounted platter
Date: n.d.
Primary Maker: In-Chin Lee
Medium: Stoneware



Title: Kneeling Male Figure
Date: c. 1995
Primary Maker: Yi Ling
Medium: Gouache on paper



Title: Composition with Fowl
Date: late 1980s
Primary Maker: Yi Ling
Medium: Gouache on paper



Title: Female Figure in an interior
Date: c. 1995
Primary Maker: Yi Ling
Medium: Gouache on paper



Title: Composition with cows

Date: late 1980s

Primary Maker: Yi Ling

Medium: Gouache on paper



Title: Actor Ichimura Takenojo in the Tanzen Dance

Primary Maker: Nishimura Magojiro

Medium: Color woodblock on paper



Title: Brown Glazed Jar

Date: 100 BCE - 100 ACE

Primary Maker: Unidentified maker

Medium: Ceramic

Title: Porcelain Vase

Date: 1644-1912

Primary Maker: Unidentified maker

Medium: Ceramic



Title: Pottery Dog

Date: 206 BCE - 220 ACE

Primary Maker: Unidentified maker

Medium: Ceramic

Title: Two Story Pottery Building

Date: 206 BCE - 220 ACE

Primary Maker: Unidentified maker

Medium: Ceramic



Title: Small Yellow Glazed Bottle Vase

Date: 1644-1912

Primary Maker: Unidentified maker

Medium: Ceramic



Title: Pottery Horse

Date: 618-907 ACE

Primary Maker: Unidentified maker

Medium: Ceramic



Title: Pottery Carriage and Ox

Date: 618-907 ACE

Primary Maker: Unidentified maker

Medium: Ceramic



Title: Bowl with Incised Lotus Design
Date: 960-1279 ACE
Primary Maker: Unidentified maker
Medium: Ceramic



Title: Pottery Mortuary Urn
Date: 5000 BCE - 2000 BCE
Primary Maker: Unidentified maker
Medium: Ceramic



Title: Blue and White Vase with Horses
Date: 1644-1912
Primary Maker: Unidentified maker
Medium: Ceramic



Title: Pottery Batrian Camel with Rider
Date: 618-907 ACE
Primary Maker: Unidentified maker
Medium: Ceramic



Title: Pair of Foo Lions
Date: 1644-1912 ACE
Primary Maker: Unidentified maker
Medium: Ceramic



Title: Vessel with Spout
Date: 960-1279 ACE
Primary Maker: Unidentified maker
Medium: Ceramic



Title: Lotus Cream Glazed Bowl
Date: 960-1279 ACE
Primary Maker: Unidentified maker
Medium: Ceramic



Title: Incised Stoneware Lotus Bowl
Date: late 10th to early 11th century
Primary Maker: Unidentified maker
Medium: Ceramic



Title: Pottery Dog
Date: 206 BCE -220 ACE
Primary Maker: Unidentified maker
Medium: Ceramic



Title: Roof Tile of Court Noble
Date: 1368-1643 ACE
Primary Maker: Unidentified maker
Medium: Ceramic



Title: Recumbant Ram Ritual Wine Vessel
Date: 206 BCE - 220 ACE
Primary Maker: Unidentified maker
Medium: Ceramic



Title: Small Yellow Glazed Bottle Vase
Date: 1644-1912
Primary Maker: Unidentified maker
Medium: Ceramic



Title: Sancai Glazed Bactrian Camel
Date: 618-907 ACE
Primary Maker: Unidentified maker
Medium: Ceramic



Title: Jar with Handles
Date: 100 BCE - 100 ACE
Primary Maker: Unidentified maker
Medium: Ceramic



Title: Chestnut Glazed Bactrian Camel
Date: 618-907 ACE
Primary Maker: Unidentified maker
Medium: Ceramic



Title: Pottery Jar with Handles
Date: 2600 BCE - 2300 BCE
Primary Maker: Unidentified maker
Medium: Ceramic



Title: Pottery Lotus Jar with Cover
Date: 1000 - 1300 ACE
Primary Maker: Unidentified maker
Medium: Ceramic



Title: Sancai Glazed Offering Plate
Date: 618-907 ACE
Primary Maker: Unidentified maker
Medium: Ceramic



Title: Blue and White Vase with Deer
Date: 1644-1912
Primary Maker: Unidentified maker
Medium: Ceramic

Title: Pottery Bactrian Camel
Date: 618-907 ACE
Primary Maker: Unidentified maker
Medium: Ceramic



Title: Jar with Handles
Date: 100 BCE - 100 ACE
Primary Maker: Unidentified maker
Medium: Ceramic



Title: Lotus Bowl
Date: 960-1279 ACE
Primary Maker: Unidentified maker
Medium: Ceramic



Title: Bronze Bowl with Handles
Date: n.d.
Primary Maker: Unidentified maker
Medium: Bronze



Title: Pottery Ding Vessel with Cover
Date: 206 BCE - 220 ACE
Primary Maker: Unidentified maker
Medium: Ceramic



Title: Bronze Hu Vessel
Date: n.d.
Primary Maker: Unidentified maker
Medium: Bronze



Title: Pottery Bactrian Camel
Date: 618-907 ACE
Primary Maker: Unidentified maker
Medium: Ceramic



Title: Pottery Figure
Date: 618-907 ACE
Primary Maker: Unidentified maker
Medium: Ceramic



Title: Brown Glazed Jar
Date: 100 BCE - 100 ACE
Primary Maker: Unidentified maker
Medium: Ceramic



Title: Pottery Horse and Groom
Date: 206 BCE - 220 ACE
Primary Maker: Unidentified maker
Medium: Ceramic



Title: Plate from tea set
Date: 18th century
Primary Maker: Unidentified maker
Medium: Black lacquer inlaid with silver and mother of pearl



Title: Pottery Ewer
Date: 960-1127 ACE
Primary Maker: Unidentified maker
Medium: Ceramic



Title: Pottery Ewer
Date: 618-700 ACE
Primary Maker: Unidentified maker
Medium: Ceramic



Title: Pottery Incense Burner
Date: 206 BCE - 220 ACE
Primary Maker: Unidentified maker
Medium: Ceramic



Title: Double Gourd Vase
Date: 618-907 ACE
Primary Maker: Unidentified maker
Medium: Ceramic



Title: Incense Burner with Cover
Date: 206 BCE - 8 ACE
Primary Maker: Unidentified maker
Medium: Ceramic



Title: Pottery Mortuary Urn
Date: 5000 BCE - 2000 BCE
Primary Maker: Unidentified maker
Medium: Ceramic



Title: Bowl
Date: 960-1279 ACE
Primary Maker: Unidentified maker
Medium: Ceramic



Title: Jar with Handles
Date: 960-1279 ACE
Primary Maker: Unidentified maker
Medium: Ceramic



Title: Turquoise Glazed Pillow
Date: 1368-1643 ACE
Primary Maker: Unidentified maker
Medium: Ceramic



Title: Pottery Mortuary Urn
Date: 5000 BCE -2000 BCE
Primary Maker: Unidentified maker
Medium: Ceramic



Title: Blue and White Porcelain Bowl
Date: 1644-1912
Primary Maker: Unidentified maker
Medium: Ceramic



Title: Pottery Horse
Date: 206 BCE - 220 ACE
Primary Maker: Unidentified maker
Medium: Ceramic



Title: Pottery Bactrian Camel
Date: 618-907 ACE
Primary Maker: Unidentified maker
Medium: Ceramic



Title: Pottery Bactrian Camel
Date: 618-907 ACE
Primary Maker: Unidentified maker
Medium: Ceramic



Title: Splashed Ground Ewer
Date: 618-907 ACE
Primary Maker: Unidentified maker
Medium: Ceramic



Title: Pottery Cocoon Jar
Date: 206 BCE - 220 ACE
Primary Maker: Unidentified maker
Medium: Ceramic

Title: Bowl from tea set
Date: 18th century
Primary Maker: Unidentified maker
Medium: Black lacquer inlaid with silver and mother of pearl



Title: Cizhou Jar
Date: 1115 - 1300
Primary Maker: Unidentified maker
Medium: Ceramic



Title: Green Glazed Kende
Date: 206 BCE - 220 ACE
Primary Maker: Unidentified maker
Medium: Ceramic



Title: Pottery Bactrian Camel
Date: 618-907 ACE
Primary Maker: Unidentified maker
Medium: Ceramic



Title: Pottery Bactrian Camel
Date: 618-907 ACE
Primary Maker: Unidentified maker
Medium: Ceramic



Title: Vessel
Date: 206 BCE - 220 ACE
Primary Maker: Unidentified maker
Medium: Ceramic



Title: Pottery Ewer
Date: 206 BCE - 220 ACE
Primary Maker: Unidentified maker
Medium: Ceramic



Title: Amber Glazed Vase
Date: 618-907 ACE
Primary Maker: Unidentified maker
Medium: Ceramic



Title: Meiping Vase
Date: 960-1127 ACE
Primary Maker: Unidentified maker
Medium: Ceramic



Title: Pottery Bactrian Camel
Date: 618-907 ACE
Primary Maker: Unidentified maker
Medium: Ceramic



Title: Pottery Lotus Jar with Cover
Date: 1000-1300 ACE
Primary Maker: Unidentified maker
Medium: Ceramic



Title: Green Glazed Pottery Jar
Date: 206 BCE - 220 ACE
Primary Maker: Unidentified maker
Medium: Ceramic



Title: Pottery Ding with Cover
Date: 206 BC-220 ACE
Primary Maker: Unidentified maker
Medium: Ceramic



Title: Pottery Ding with Cover
Date: 206 BCE -220 ACE
Primary Maker: Unidentified maker
Medium: Ceramic



Title: Pottery Bactrian Camel
Date: 618-907 ACE
Primary Maker: Unidentified maker
Medium: Ceramic

Title: Cup from tea set
Date: 18th century
Primary Maker: Unidentified maker
Medium: Black lacquer inlaid with silver and mother of pearl



Title: Hardstone Seal Chop
Date: 1644-1912
Primary Maker: Unidentified maker
Medium: Hardstone



Title: Amber Glazed Pottery Jar
Date: 206 BCE - 220 ACE
Primary Maker: Unidentified maker
Medium: Ceramic



Title: Pottery Bactrian Camel
Date: 618-907 ACE
Primary Maker: Unidentified maker
Medium: Ceramic



Title: Small Pottery Jar
Date: 618-907 ACE
Primary Maker: Unidentified maker
Medium: Ceramic



Title: Pottery Ram
Date: 206 BCE - 220 ACE
Primary Maker: Unidentified maker
Medium: Ceramic



Title: Pottery Dog
Date: 206 BCE -220 ACE
Primary Maker: Unidentified maker
Medium: Ceramic



Title: Sancai Glazed Bactrian Camel
Date: 618-907 ACE
Primary Maker: Unidentified maker
Medium: Ceramic



Title: Small Vase with Scholar Motifs
Date: 1644-1912
Primary Maker: Unidentified maker
Medium: Ceramic



Title: Pottery Dog
Date: 206 BCE - 220 ACE
Primary Maker: Unidentified maker
Medium: Ceramic

Title: Green Glazed Jar
Date: 206 BCE - 220 AD
Primary Maker: Unidentified maker
Medium: Ceramic



Title: Brown Glazed Vessel
Date: 206 BCE - 220 ACE
Primary Maker: Unidentified maker
Medium: Ceramic



Title: Amphora
Date: 618-907 ACE
Primary Maker: Unidentified maker
Medium: Ceramic



Title: White Meiping Vase
Date: 1644-1912
Primary Maker: Unidentified maker
Medium: Ceramic



Title: White Glazed Pottery Jar
Date: 618-907 ACE
Primary Maker: Unidentified maker
Medium: Ceramic



Title: Junyao Bowl
Date: 960-1279 ACE
Primary Maker: Unidentified maker
Medium: Ceramic



Title: Pottery Dog
Date: 206 BCE - 220 ACE
Primary Maker: Unidentified maker
Medium: Ceramic



Title: Turquoise Glazed Teapot with Cover
Date: 1368-1643 ACE
Primary Maker: Unidentified maker
Medium: Ceramic



Title: Pottery Mortuary Urn
Date: 5000 BCE -2000 BCE
Primary Maker: Unidentified maker
Medium: Ceramic



Title: Pottery Black Glazed Ewer
Date: 960-1279
Primary Maker: Unidentified maker
Medium: Ceramic

Title: Pottery Horse

Date: 206 BCE - 220 ACE

Primary Maker: Unidentified maker

Medium: Ceramic



Title: Pottery Dog

Date: 206 BCE - 220 ACE

Primary Maker: Unidentified maker

Medium: Ceramic



Title: Pottery Horse

Date: 618-907 ACE

Primary Maker: Unidentified maker

Medium: Ceramic



Title: Pottery Dog

Date: 206 BCE - 220 ACE

Primary Maker: Unidentified maker

Medium: Ceramic



Title: Pottery Dog

Date: 206 BCE-220 ACE

Primary Maker: Unidentified maker

Medium: Ceramic



Title: Pottery Ewer

Date: 618-907 ACE

Primary Maker: Unidentified maker

Medium: Ceramic



Title: Dish with Three Legs

Date: 1271-1368

Primary Maker: Unidentified maker

Medium: Ceramic



Title: Green Glazed Kende

Date: 618-907 ACE

Primary Maker: Unidentified maker

Medium: Ceramic



Title: Carved Wood Figure

Date: 1368-1643

Primary Maker: Unidentified maker

Medium: Ceramic



Title: Pottery Chimera
Date: 618-907 ACE
Primary Maker: Unidentified maker
Medium: Ceramic



Title: Grey Cocoon Jar
Date: 206 BCE - 220 ACE
Primary Maker: Unidentified maker
Medium: Ceramic



Title: Amphora
Date: 618-907 ACE
Primary Maker: Unidentified maker
Medium: Ceramic



Title: Pottery Dog
Date: 206 BCE - 220 ACE
Primary Maker: Unidentified maker
Medium: Ceramic



Title: Brown Black Glazed Jar with Handles
Date: 960-1279 ACE
Primary Maker: Unidentified maker
Medium: Ceramic



Title: Celadon Glazed Vase
Date: 206 BCE-220 ACE
Primary Maker: Unidentified maker
Medium: Ceramic



Title: Pottery Horse
Date: 618-907 ACE
Primary Maker: Unidentified maker
Medium: Ceramic



Title: Pottery Dog
Date: 206 BCE - 220 ACE
Primary Maker: Unidentified maker
Medium: Ceramic



Title: Ewer
Date: 960-1279 ACE
Primary Maker: Unidentified maker
Medium: Ceramic



Title: Cizhou Jar
Date: 1115-1300 ACE
Primary Maker: Unidentified maker
Medium: Ceramic



Title: Straw Glazed Ewer
Date: 618-907 ACE
Primary Maker: Unidentified maker
Medium: Ceramic



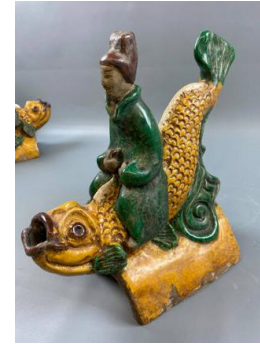
Title: Ewer
Date: 960-1279 ACE
Primary Maker: Unidentified maker
Medium: Ceramic



Title: Turquoise Glazed Vase
Date: 1368-1643 ACE
Primary Maker: Unidentified maker
Medium: Ceramic



Title: Brown Glazed Jar
Date: 618-907 ACE
Primary Maker: Unidentified maker
Medium: Ceramic



Title: Roof Tile with Figure Riding a Carp
Date: 1368-1643 ACE
Primary Maker: Unidentified maker
Medium: Ceramic



Title: Turquoise Glazed Vase
Date: 1368-1643 ACE
Primary Maker: Unidentified maker
Medium: Ceramic



Title: Vase
Date: 907 -1125 AD
Primary Maker: Unidentified maker
Medium: Ceramic



Title: Small Blue and White Porcelain Tea Bowl
Date: 1644-1912
Primary Maker: Unidentified maker
Medium: Ceramic



Title: Brown Glazed Ewer
Date: 618-907 ACE
Primary Maker: Unidentified maker
Medium: Ceramic

Title: Temple Pottery Incense Burner
Date: 19th or 20th century
Primary Maker: Unidentified maker
Medium: Ceramic



Title: Small Blue and White Jar
Date: 1368-1643 ACE
Primary Maker: Unidentified maker
Medium: Ceramic



Title: Green Glazed Pottery Jar
Date: 206 BCE - 220 ACE
Primary Maker: Unidentified maker
Medium: Ceramic



Title: Pottery Figure
Date: 618-907 ACE
Primary Maker: Unidentified maker
Medium: Ceramic



Title: Pottery Horse and Groom
Date: 206 BCE - 220 ACE
Primary Maker: Unidentified maker
Medium: Ceramic



Title: Green Glazed Jar
Date: 206 BCE - 220 AD
Primary Maker: Unidentified maker
Medium: Ceramic



Title: Celadon Glazed Plate
Date: 13th century-16th century
Primary Maker: Unidentified maker
Medium: Ceramic



Title: Pottery Bactrian Camel
Date: 618-907 ACE
Primary Maker: Unidentified maker
Medium: Ceramic



Title: Pottery Mortuary Urn
Date: 5000 BCE - 2000 BCE
Primary Maker: Unidentified maker
Medium: Ceramic



Title: Roof Tile with Figure Riding a Carp
Date: 1368-1643 ACE
Primary Maker: Unidentified maker
Medium: Ceramic



Title: Pottery Dog
Date: 206 BCE - 220 ACE
Primary Maker: Unidentified maker
Medium: Ceramic



Title: Jar
Date: 1392-1910 ACE
Primary Maker: Unidentified maker
Medium: Ceramic



Title: Blue and White Porcelain Octagonal Cup
Date: 18th century
Primary Maker: Unidentified maker
Medium: Ceramic



Title: Pottery Horse
Date: 618 ACE -907 ACE
Primary Maker: Unidentified maker
Medium: Ceramic



Title: Junyao Bowl
Date: 960-1279 ACE
Primary Maker: Unidentified maker
Medium: Ceramic



Title: Pottery Jar
Date: 960-1279 ACE
Primary Maker: Unidentified maker
Medium: Ceramic



Title: Turquoise Glazed Vase
Date: 1368-1643
Primary Maker: Unidentified maker
Medium: Ceramic



Title: Mythical Creature Ewer
Date: 1644-1912 ACE
Primary Maker: Unidentified maker
Medium: Ceramic



Title: Pottery Horse
Date: 206 BCE - 220 ACE
Primary Maker: Unidentified maker
Medium: Ceramic



Title: Bowl
Date: 1664-1912 ACE
Primary Maker: Unidentified maker
Medium: Ceramic



Title: Pottery Goose Head Vessel
Date: 206 BCE - 220 ACE
Primary Maker: Unidentified maker
Medium: Ceramic



Title: Pottery Bactrian Camel
Date: 618-907 ACE
Primary Maker: Unidentified maker
Medium: Ceramic



Title: Junyao Bowl
Date: 960-1279 ACE
Primary Maker: Unidentified maker
Medium: Ceramic



Title: Pottery Bactrian Camel
Date: 618-907 ACE
Primary Maker: Unidentified maker
Medium: Ceramic



Title: Pottery Horse with Rider
Date: 618-907 ACE
Primary Maker: Unidentified maker
Medium: Ceramic



Title: Pottery Chimera
Date: 206 BCE -220 ACE
Primary Maker: Unidentified maker
Medium: Ceramic



Title: Pottery Horse and Rider
Date: 618-907 ACE
Primary Maker: Unidentified maker
Medium: Ceramic



Title: Jar with Ring Stand
Date: 7000 -1700 BCE
Primary Maker: Unidentified maker
Medium: Ceramic



Title: Jar
Date: 960-1279 ACE
Primary Maker: Unidentified maker
Medium: Ceramic



Title: Pottery Ding with Cover
Date: 206 BCE - 220 ACE
Primary Maker: Unidentified maker
Medium: Ceramic



Title: Pottery Mortuary Urn
Date: 5000 BCE-2000 BCE
Primary Maker: Unidentified maker
Medium: Ceramic



Title: Jar with Handles
Date: 960-1279 ACE
Primary Maker: Unidentified maker
Medium: Ceramic



Title: Pottery Cocoon Jar
Date: 206 BCE - 220 ACE
Primary Maker: Unidentified maker
Medium: Ceramic



Title: Amphora
Date: 618-907 ACE
Primary Maker: Unidentified maker
Medium: Ceramic



Title: Pottery Jar
Date: 206 BCE -220 ACE
Primary Maker: Unidentified maker
Medium: Ceramic



Title: Pottery Horse with Rider
Date: 618-907 ACE
Primary Maker: Unidentified maker
Medium: Ceramic



Title: Pottery Bactrian Camel
Date: 618-907 ACE
Primary Maker: Unidentified maker
Medium: Ceramic



Title: Pottery Horse and Rider
Date: 618-907 ACE
Primary Maker: Unidentified maker
Medium: Ceramic



Title: Pottery Bactrian Camel
Date: 618-907 ACE
Primary Maker: Unidentified maker
Medium: Ceramic



Title: Pottery Dog
Date: 206 BCE - 220 ACE
Primary Maker: Unidentified maker
Medium: Ceramic



Title: Yellow Glazed Vase with Dragon
Date: 1644-1912
Primary Maker: Unidentified maker
Medium: Ceramic



Title: Ewer
Date: 618-907 ACE
Primary Maker: Unidentified maker
Medium: Ceramic



Title: Small Blue and White Porcelain Tea Bowl
Date: 1644-1912
Primary Maker: Unidentified maker
Medium: Ceramic



Title: Cizhou Jar
Date: 1115-1300 ACE
Primary Maker: Unidentified maker
Medium: Ceramic



Title: Sang de Boeuf
Water Holder
Date: 1644-1912
Primary Maker: Unidentified
maker
Medium: Ceramic

Title: Rice Bowl
Date: 1644 - 1911
Primary Maker: Unidentified
maker
Medium: Glazed Porcelain



Title: Cizhou Jar
Date: n.d.
Primary Maker: Unidentified
maker
Medium: Ceramic



Title: Pottery Jar
Date: 206 BCE -8 ACE
Primary Maker: Unidentified
maker
Medium: Ceramic



Title: Pottery Hu Jar
Date: 206 BCE - 220 ACE
Primary Maker: Unidentified
maker
Medium: Ceramic



Title: Carved Wood
Court Lady
Date: 618-907 ACE
Primary Maker: Unidentified
maker
Medium: Wood

Title: Sancai Glazed Jar
Date: 618-907 ACE
Primary Maker: Unidentified
maker
Medium: Ceramic



Title: Bronze Hu Wine
Vessel
Date: 1050 - 221 BCE
Primary Maker: Unidentified
maker
Medium: Bronze



Title: Pottery Goose
Head Vessel
Date: 206 BCE - 220 ACE
Primary Maker: Unidentified
maker
Medium: Ceramic



Title: Pottery Horse
Date: 618-907 ACE
Primary Maker: Unidentified maker
Medium: Ceramic



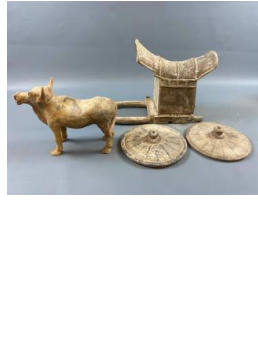
Title: Pottery Jar
Date: 206 BCE - 8 ACE
Primary Maker: Unidentified maker
Medium: Ceramic



Title: Pottery Goose Head Vessel
Date: 206 BCE - 220 ACE
Primary Maker: Unidentified maker
Medium: Ceramic



Title: Pottery Bactrian Camel
Date: 618-907 ACE
Primary Maker: Unidentified maker
Medium: Ceramic



Title: Pottery Ox Cart
Date: 420-589 ACE
Primary Maker: Unidentified maker
Medium: Ceramic



Title: Pottery Court Lady
Date: 618-907 ACE
Primary Maker: Unidentified maker
Medium: Ceramic



Title: Pottery Hu Vase
Date: 206 BCE - 220 ACE
Primary Maker: Unidentified maker
Medium: Ceramic



Title: Black Glazed Ewer
Date: 480-256 BCE
Primary Maker: Unidentified maker
Medium: Ceramic

Title: Symbol No. Two
Date: 1957
Primary Maker: Haku Maki
Medium: Color woodcut on wove paper

Title: Symbol No. 3

Date: 1957

Primary Maker: Haku Maki

Medium: Color woodcut on wove paper



Title: Work 74-94

Date: 1974

Primary Maker: Haku Maki

Medium: relief print



Title: Vase (hanaire)

Date: 2016

Primary Maker: MUNEHIKO

Maruta

Medium: Stoneware with iron-ash glaze Chsen-karatsu type



Title: Tosei Bijin Iro Kurube

Primary Maker: Kitao

Masanobu

Medium: Color woodblock on paper



Title: Cool Evening at Ryogoku Ryomi

Primary Maker: Okumura

Masanobu

Medium: Color woodblock on paper (triptych)



Title: Cool Evening at Ryogoku Ryomi

Primary Maker: Okumura

Masanobu

Medium: Color woodblock on paper (triptych)



Title: After the Bath
Date: printed after 1744
Primary Maker: Okumura Masanobu
Medium: Woodblock print on paper



Title: Cool Evening at Ryogoku Ryomi
Primary Maker: Okumura Masanobu
Medium: Color woodblock on paper (triptych)

Title: The Actor Ichikawa Danjuro II as Sukeroku
Primary Maker: Okumura Masanobu
Medium: Color woodblock on paper

Title: The Clerk Kichisaburo with a Letter from His Lover Oshichi
Primary Maker: Okumura Masanobu
Medium: Color woodblock on paper

Title: Makura Byobu
Primary Maker: Kano Masuyoshi
Medium: Colored ink on paper, pillow screen



Title: Rabbits By Stream From Korin Gashiki
Primary Maker: Aikawa Minwa
Medium: Woodblock (sumi and slight color) on thin laid japan paper - 2 sheets



Title: Tea bowl (chawan)
Date: 2017
Primary Maker: TOKUSAWA Mitsunori
Medium: Stoneware with ash glaze Sue-karatsu type



Title: Bowl
Date: n.d.
Primary Maker: Hanjiro Mizuno
Medium: White stoneware, transparent glaze with green pigment

Title: Monkeys
Date: N.D.
Primary Maker: Sosen Mori
Medium: Color and Sumi



Title: untitled (round vessel with faceted edge pattern and four point lip)
Date: c. 1990
Primary Maker: Togaku Mori
Medium: Unglazed stoneware

Title: Hand Game in Geisha-house at the New Yoshiwara
Primary Maker: Furuyama Moromasa
Medium: Color woodblock on paper, hand-colored

Title: In a Private Room, from Yoshiwara No Tei
Primary Maker: Hishikawa Moronobu
Medium: Woodblock on paper



Title: In Guest Room (from the series Scenes at Yoshiwara)
Date: 1682-83
Primary Maker: Hishikawa Moronobu
Medium: Monochrome woodblock print



Title: In the Kitchen (from the series Scenes at Yoshiwara)
Date: 1682-83
Primary Maker: Hishikawa Moronobu
Medium: Monochrome woodblock print



Title: Behind the Screen
Primary Maker: Hishikawa Moronobu
Medium: Hand-colored print on paper

Title: Nassau County #2
Date: c. 1962
Primary Maker: Seong Moy
Medium: Color woodcut on Japan paper



Title: Oval Atop a Cosmos Ball
Date: 2000 CE
Primary Maker: Takashi Murakami
Medium: Plastic and minidisc



Title: Gate To The Temple
Date: 1971
Primary Maker: Kiyoshi Nagai
Medium: woodcut



Title: Yatsusashi, Eight Bridges, from Utsuwa (ladel for vessel)

Date: 2012

Primary Maker: Takuo Nakamura

Medium: Stoneware with kutani glazes



Title: Yatsusashi, Eight Bridges, from Utsuwa (vessel and motif of blooming irises and garden bridges)

Date: 2012

Primary Maker: Takuo Nakamura

Medium: Stoneware with kutani glazes



Title: Daimyo's Inn at Kusatsu

Date: 1975

Primary Maker: Katsuyuki Nishijima

Medium: woodcut



Title: Evening Glow At Aki River, From Series "Eight Views Of Lake Biwa"

Date: 1981

Primary Maker: Katsuyuki Nishijima

Medium: Color woodblock print on paper

Title: Sakuma Morimasa Attacking Hioeyoshi

Date: 1880-1890

Primary Maker: Nobuichi

Medium: Color woodblock on paper



Title: Mountain

Primary Maker: Nong

Medium: Mixed media



Title: Tree Tops

Date: 1972

Primary Maker: Shogo Okamoto

Medium: color etching

Title: Demonstrators

Primary Maker: Krishna Reddy

Medium: Etching on paper



Title: Actor as Kamakura Gongoro Kagemasa

Date: ca. 1950

Primary Maker: Hasegawa Sadanobu III

Medium: Multicolor woodblock print

Title: Japanese Winter Landscape
Primary Maker: Kiyoshi Saito
Medium: Woodcut on paper

Title: Ancient City Nara
Date: 1957
Primary Maker: Kiyoshi Saito
Medium: Color woodcut on wove paper

Title: Roosters
Primary Maker: Kiyoshi Saito
Medium: Color woodcut on paper



Title: Actor Sawamura Sojuro and Segawa Kikunojo
Primary Maker: Toshusai Sharaku
Medium: Color woodblock print, white mica ground



Title: Houses in Snow
Date: c. 1915
Primary Maker: Watanabe Seitei
Medium: Watercolor and ink on silk

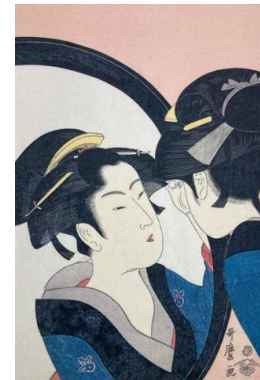


Title: Actor Narita-Ya Sansho
Primary Maker: Toshusai Sharaku
Medium: Color woodcut on laid Japan paper

Title: Actors Matsumoto Koshiro and Nakayama Tomisburo
Primary Maker: Toshusai Sharaku
Medium: Woodcut on paper



Title: Actor Otani Oniji
Primary Maker: Toshusai Sharaku
Medium: Woodcut on paper



Title: Rear View Of Actress
Date: 1794
Primary Maker: Toshusai Sharaku
Medium: Color woodblock print on thin laid paper



Title: Japanese Actor Ichikawa Omezo as Ippei, A Vassal
Primary Maker: Toshusai Sharaku
Medium: Woodblock on paper (dark mica ground) (facsimile)



Title: Beauties of the East, from "Beauties of the Four Directions" (Oshima and Onake, geisha from Nakanochō)
Primary Maker: Kitao Shigemasa
Medium: Color woodblock on paper



Title: Act VII of Chushingura
Date: n.d.
Primary Maker: Utagawa Shigenobu (Hiroshige II)
Medium: Color woodblock on paper



Title: Birds
Date: n. d.
Primary Maker: Tamami Shima
Medium: Color woodcut on paper



Title: Sunflower
Date: 1970
Primary Maker: Kawarazaki Shodo
Medium: Woodblock on paper



Title: Cactus
Date: 1970
Primary Maker: Kawarazaki Shodo
Medium: Woodblock on paper



Title: Hollyhock
Date: 1970
Primary Maker: Kawarazaki Shodo
Medium: Woodblock on paper



Title: Magnolia Grandiflora
Date: 1970
Primary Maker: Kawarazaki Shodo
Medium: Woodblock on paper



Title: Water Plaintain
Date: 1970
Primary Maker: Kawarazaki Shodo
Medium: Woodblock on paper



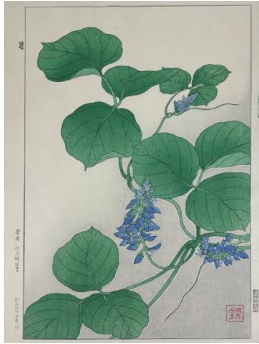
Title: Lenanthera
Date: 1970
Primary Maker: Kawarazaki Shodo
Medium: Woodblock on paper



Title: Variegated Camellia
Date: 1970
Primary Maker: Kawarazaki Shodo
Medium: Woodblock on paper



Title: Iris Japonica
Date: 1970
Primary Maker: Kawarazaki Shodo
Medium: Woodblock on paper



Title: Vine (Kudzu)
Date: 1970
Primary Maker: Kawarazaki Shodo
Medium: Woodblock on paper



Title: Actor Nakajama Mihoemon as Kono - Moronao (Villain of the play Chushingura) (from untitled series of grey green oban)
Date: 1795
Primary Maker: Katsukawa Shunei
Medium: Color woodblock on paper



Title: Nakamura Nakazo as a Warrior
Date: 1789
Primary Maker: Katsukawa Shunko
Medium: Color woodblock on paperc(facsimile)



Title: Chidori Tama River from Mutamagawa (6 Tama Rivers)
Primary Maker: Kubo Shunman
Medium: Color woodblock on paper (facsimile)



Title: Flutist Performing for Emperor
Primary Maker: Kubo Shunman
Medium: Color woodblock on laid Japan paper



Title: The Actor Ichikawa Danjro V in His Dressing Room
Date: 1785
Primary Maker: Katsukawa Shunsh
Medium: Multicolor woodblock print (facsimile)



Title: Actor Sawamura Sojuro and Segawa Kikunojo in Green Room
Primary Maker: Katsukawa Shunsh
Medium: Color woodblock on paper



Title: Actors Nakamura Nakazo and Nakamura Matsue in Green Room
Date: 1785
Primary Maker: Katsukawa Shunsh
Medium: Color woodblock on paper

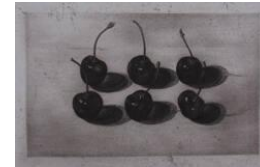


Title: Ichikawa Monnosuke and Onoc Matsusuke Talking with a Tea Server
Primary Maker: Katsukawa Shunsh
Medium: Color woodblock on paper

Title: Herdsman with Cattle
Date: 1962
Primary Maker: Francis Newton Souza
Medium: Oil on paper, color reproduction



Title: Target
Date: 1978
Primary Maker: Adrian Van Suchtelen
Medium: etching



Title: Cherries
Date: 1978
Primary Maker: Adrian Van Suchtelen
Medium: etching



Title: Pomegranates
Date: 1978
Primary Maker: Adrian Van Suchtelen
Medium: etching



Title: Three Trees
Date: 1978
Primary Maker: Adrian Van Suchtelen
Medium: etching



Title: Cherries
Date: 1978
Primary Maker: Adrian Van Suchtelen
Medium: lithograph



Title: Four Graces
Date: 1978
Primary Maker: Adrian Van Suchtelen
Medium: etching



Title: Three Lillies
Date: 1978
Primary Maker: Adrian Van Suchtelen
Medium: etching

Title: Time Out
Date: 1978
Primary Maker: Adrian Van Suchtelen
Medium: Etching and aquatint

Title: Seven
Date: 1978
Primary Maker: Adrian Van Suchtelen
Medium: Shaped Color Lamination

Title: Untitled (Bowl)
Date: 2004
Primary Maker: Do-Ho Suh
Medium: Glass



Title: Girl Sitting On A Veranda With A Dinner In Her Hand
Date: 1723
Primary Maker: Nishikawa Sukenobu
Medium: Woodblock on thin wove paper

Title: Zen Temple
Primary Maker: Rikio Takahashi
Medium: Color woodcut on paper



Title: Moonlight In Wakanoura
Date: 1975
Primary Maker: Asano Takeji
Medium: Woodblock on paper

Title: Landscape with Child
Primary Maker: Kojin Toneyama
Medium: Color lithograph on paper

Title: Reproduction of Murals in the Horyuji Monastery
Primary Maker: Torii
Medium: Color photograph

Title: Reproduction of Murals in the Horyuji Monastery
Primary Maker: Torii
Medium: Color photograph

Title: Reproduction of Murals in the Horyuji Monastery
Primary Maker: Torii
Medium: Color photograph

Title: Reproduction of Murals in the Horyuji Monastery
Primary Maker: Torii
Medium: Color photograph

Title: Reproduction of Murals in the Horyuji Monastery
Primary Maker: Torii
Medium: Color photograph

Title: Reproduction of Murals in the Horyuji Monastery
Primary Maker: Torii
Medium: Color photograph

Title: Reproduction of Murals in the Horyuji Monastery
Primary Maker: Torii
Medium: Color photograph

Title: Reproduction of Murals in the Horyuji Monastery
Primary Maker: Torii
Medium: Color photograph

Title: Reproduction of Murals in the Horyuji Monastery
Primary Maker: Torii
Medium: Color photograph

Title: Reproduction of Murals in the Horyuji Monastery
Primary Maker: Torii
Medium: Color photograph

Title: Reproduction of Murals in the Horyuji Monastery
Primary Maker: Torii
Medium: Color photograph

Title: Reproduction of Murals in the Horyuji Monastery
Primary Maker: Torii
Medium: Color photograph

Title: Reproduction of Murals in the Horyuji Monastery
Primary Maker: Torii
Medium: Color photograph

Title: Reproduction of Murals in the Horyuji Monastery
Primary Maker: Torii
Medium: Color photograph

Title: Reproduction of Murals in the Horyuji Monastery
Primary Maker: Torii
Medium: Color photograph

Title: Reproduction of Murals in the Horyuji Monastery
Primary Maker: Torii
Medium: Color photograph

Title: Reproduction of Murals in the Horyuji Monastery
Primary Maker: Torii
Medium: Color photograph

Title: Reproduction of Murals in the Horyuji Monastery
Primary Maker: Torii
Medium: Color photograph

Title: Reproduction of Murals in the Horyuji Monastery
Primary Maker: Torii
Medium: Color photograph

Title: Reproduction of Murals in the Horyuji Monastery
Primary Maker: Torii
Medium: Color photograph

Title: Reproduction of Murals in the Horyuji Monastery
Primary Maker: Torii
Medium: Color photograph

Title: Reproduction of Murals in the Horyuji Monastery
Primary Maker: Torii
Medium: Color photograph

Title: Reproduction of Murals in the Horyuji Monastery
Primary Maker: Torii
Medium: Color photograph

Title: Reproduction of Murals in the Horyuji Monastery
Primary Maker: Torii
Medium: Color photograph

Title: Reproduction of Murals in the Horyuji Monastery
Primary Maker: Torii
Medium: Color photograph

Title: Reproduction of Murals in the Horyuji Monastery
Primary Maker: Torii
Medium: Color photograph

Title: Reproduction of Murals in the Horyuji Monastery
Primary Maker: Torii
Medium: Color photograph

Title: Reproduction of Murals in the Horyuji Monastery

Primary Maker: Torii

Medium: Color photograph

Title: Reproduction of Murals in the Horyuji Monastery

Primary Maker: Torii

Medium: Color photograph

Title: Reproduction of Murals in the Horyuji Monastery

Primary Maker: Torii

Medium: Color photograph

Title: Beauty Looking Over Right Shoulder

Date: 19th Century

Primary Maker: Toshimitsu

Medium: Black and red ink on thin laid Japan rice paper

Title: Beauty with Her Hand in Her Obi

Date: 19th Century

Primary Maker: Toshimitsu

Medium: Black and brown ink on thin Japan paper

Title: Two Girls and a Man Playing Badminton

Date: 19th Century

Primary Maker: Toshimitsu

Medium: Ink on laid Japan paper



Title: Cloth Vendor

Date: 18th century

Primary Maker: Okumura Toshinobu

Medium: Handcolored woodblock on paper (hand colored)



Title: Monument Valley

Date: n.d.

Primary Maker: Toshio Yoshida

Medium: Woodblock print on wove paper

Title: Actor as Hayano Kampei

Date: 1854

Primary Maker: Toyokuni III (Utagawa Kunisada)

Medium: Color woodblock on paper

Title: Actors Sawamura Tossyo and Iwai Kumesa Buro as his daughter Okume
Date: 1830
Primary Maker: Toyokuni III (Utagawa Kunisada)
Medium: Color woodblock on paper

Title: The Actors Ichika Wa Enzo as Nazametsu and Sawamu
Primary Maker: Toyokuni III (Utagawa Kunisada)
Medium: Color woodblock on paper

Title: Woman Frightened by Lantern
Date: 1852
Primary Maker: Toyokuni III (Utagawa Kunisada)
Medium: Color woodblock on paper

Title: The Actor Iwai Kakitsu as the Wife
Primary Maker: Toyokuni III (Utagawa Kunisada)
Medium: Color woodcut on paper



Title: Samurai Under Moon with Bats
Date: 1859
Primary Maker: Toyokuni III (Utagawa Kunisada)
Medium: Color woodblock print

Title: A Female Narihira at Yatsuheshi
Date: 1830
Primary Maker: Toyokuni III (Utagawa Kunisada)
Medium: Color woodblock on laid Japan paper

Title: Women Washing, from Jisei Edo Kanoko
Primary Maker: Toyokuni III (Utagawa Kunisada)
Medium: Color woodblock on paper

Title: Actors as Tannichi-Bo Hitomaru Oroku, Yamagata
Date: 1854
Primary Maker: Toyokuni III (Utagawa Kunisada)
Medium: Color woodblock on paper, triptych



Title: Man with tattos
Date: 1859
Primary Maker: Toyokuni III (Utagawa Kunisada)
Medium: Color woodblock print



Title: Actor Ichikawa Danjuro as Kezori Kyuemon
Date: 1852
Primary Maker: Toyokuni III (Utagawa Kunisada)
Medium: Woodblock on paper

Title: Brother Picture for Act II of Chushingura
Primary Maker: Toyokuni III (Utagawa Kunisada)
Medium: Color woodblock on paper

Title: Follow the Leader
Date: 1859
Primary Maker: Toyokuni III (Utagawa Kunisada)
Medium: Color woodblock on paper

Title: Prince Genji Viewing Cherry Blossoms
Date: 1859
Primary Maker: Toyokuni III (Utagawa Kunisada)
Medium: Color Woodblock on Japan paper (triptych)



Title: Kayoi Komachi
Primary Maker: Utagawa Toyokuni
Medium: Color woodblock on paper



Title: Samurai
Date: c. 1810
Primary Maker: Utagawa Toyokuni
Medium: Color woodblock print



Title: Kataska Niraemon and Ichilcawayaozo in a Night Duel
Primary Maker: Utagawa Toyokuni
Medium: Color woodblock on paper (facsimile)



Title: Visit at a Temple Overlooking Edo Bay
Primary Maker: Utagawa Toyokuni
Medium: Color woodcut on paper (facsimile)



Title: Scene From Kabuki Drama
Date: 1820
Primary Maker: Utagawa Toyokuni
Medium: Woodblock on paper



Title: Three Samurai
Date: c. 1810
Primary Maker: Utagawa Toyokuni
Medium: Color woodblock print



Title: Ichikawa Komazo Holding a Sword and Mirror
Primary Maker: Utagawa Toyokuni
Medium: Color woodblock on paper (facsimile)



Title: Actor, Ichikawa Ichizo, As Hinin Mabushi No Goro
Primary Maker: Utagawa Toyokuni
Medium: Color woodblock on laid paper



Title: Untitled (Woman With Puppet)
Date: 1767-1773
Primary Maker: Ishikawa Toyomasa
Medium: Color woodblock print on laid paper



Title: Woman Dressing
Primary Maker: Ishikawa Toyonobu
Medium: Color woodblock on paper (facsimile of painting)



Title: Study For Tulsi Puja
Date: 1915
Primary Maker: Antonio Xavier Trindade
Medium: graphite and watercolor

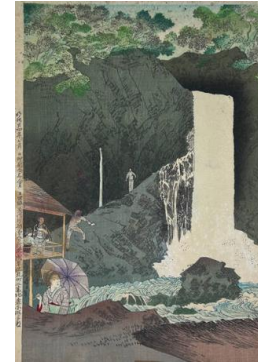
Title: Man's Challenge to the Moon
Primary Maker: Kazuo Tsuchimochi
Medium: Four color etching on paper

Title: By the Lake
Primary Maker: Ansei Uchima
Medium: Color woodcut on paper

Title: Daigoji Of Kyoto
Date: n.d.
Primary Maker: Unidentified artist
Medium: brush & ink on Japan paper mounted on silk tapestry backed w/ rice paper

Title: Cherry Blossom Viewing
Primary Maker: Unidentified artist
Medium: Color woodblock on paper

Title: Ono-O-Komachi Washing Her Poem
Date: 18th Century
Primary Maker: Unidentified artist
Medium: Ukiyoe painting, scroll



Title: Waterfall
Date: 1891
Primary Maker: Unidentified artist
Medium: Color woodblock print

Title: Paddle
Primary Maker: Unidentified maker
Medium: Wood

Title: Armor
Date: 1500-1700
Primary Maker: Unidentified maker
Medium: Metal, Fabric

Title: Suit of Armor (Tosei-gusoku style)
Date: 1650-1775
Primary Maker: Unidentified maker
Medium: Metal, Hair

Title: Saya (scabbard) for Katana blade
Date: 1912-1926
Primary Maker: Unidentified maker
Medium: Steel, wood, iron, and leather

Title: Armor
Date: 1500-1700
Primary Maker: Unidentified maker
Medium: Metal, Fabric

Title: Katana Blade And Saya
Date: 1800-1840
Primary Maker: Unidentified maker
Medium: Steel

**Title: Suit of Armor
(Tosei-gusoku style)**
Date: 1650-1775
Primary Maker: Unidentified
maker
Medium: Metal, Fabric

**Title: Tachi Blade And
Saya**
Date: 1700-1799
Primary Maker: Unidentified
maker
Medium: Steel

**Title: Guard For
Breastplate**
Date: 1500-1700
Primary Maker: Unidentified
maker
Medium: Metal, Textile

Title: Armor
Date: 1500-1700
Primary Maker: Unidentified
maker
Medium: Metal, Fabric

**Title: Nuinobe-do and
accessories (two
armguards, backplate,
breastplate, thigh guard,
two shoulder guards,
two leg guards)**
Date: late 16th - early 17th
centuries
Primary Maker: Unidentified
maker
Medium: Metal and fabric

**Title: Suit of Armor
(Tosei-gusoku style)**
Date: 1650-1775
Primary Maker: Unidentified
maker
Medium: Metal

**Title: Goddess (Parvati-
Annapurna)**
Date: 18th century
Primary Maker: Unidentified
maker
Medium: Bronze with wooden
base

**Title: Armor (Guard For
Breastplate)**
Date: 1500-1700
Primary Maker: Unidentified
maker
Medium: Metal, Textile

**Title: Guard For
Yukinoshita-Do
(Chestplate)**
Date: 1575-1625
Primary Maker: Unidentified
maker
Medium: Metal, Fabric

Title: Bread Tray

Primary Maker: Unidentified
maker

Medium: Wood

Title: Comb

Primary Maker: Unidentified
maker

Medium: Wood

Title: Comb

Primary Maker: Unidentified
maker

Medium: Wood

**Title: Kazaritachi
Mounting With Tachi
Blade**

Date: 1600-1699

Primary Maker: Unidentified
maker

Medium: Steel

**Title: Armir (Guard For
Breastplate)**

Date: 1500-1700

Primary Maker: Unidentified
maker

Medium: Metal, Textile

Title: Sword

Primary Maker: Unidentified
maker

Medium: Steel and bronze

**Title: Guard For
Yukinoshita-Do
(Chestplate)**

Date: 1575-1625

Primary Maker: Unidentified
maker

Medium: Metal, Fabric

**Title: Suit of Armor
(Tosei-Gusoku Style)**

Date: 1650-1775

Primary Maker: Unidentified
maker

Medium: Metal, Fabric

Title: Ancestor Figure

Primary Maker: Unidentified
maker

Medium: Wood

Title: Matchlock musket
Date: 18th Century
Primary Maker: Unidentified maker
Medium: Wood, metal and brass

Title: Baton (Dance Wand)
Primary Maker: Unidentified maker
Medium: Wood

Title: Baton (Dance Wand)
Primary Maker: Unidentified maker
Medium: Wood

Title: Shinshinto Katana Blade And Saya
Date: 1600-1700
Primary Maker: Unidentified maker
Medium: Steel

Title: Spear and scabbard
Date: n.d.
Primary Maker: Unidentified maker
Medium: Steel and wood

Title: Nuinobe-do and accessories (two chain mail shirts, mannequin torso and head)
Date: late 16th - early 17th centuries
Primary Maker: Unidentified maker
Medium: Metal and fabric

Title: Bamboo Cylinder
Primary Maker: Unidentified maker
Medium: Bamboo

Title: Katana Blade And Saya
Date: 1800
Primary Maker: Unidentified maker
Medium: Steel

Title: Shinshinto Katana Blade And Saya
Date: 1600-1700
Primary Maker: Unidentified maker
Medium: Steel

Title: Baton (Dance Wand)
Primary Maker: Unidentified maker
Medium: Wood

Title: Sword
Primary Maker: Unidentified maker
Medium: Steel and bronze

Title: Baton (Dance Wand)
Primary Maker: Unidentified maker
Medium: Wood

Title: Spear
Date: n.d.
Primary Maker: Unidentified maker
Medium: Steel, wood

Title: Kazaritachi Mounting With Tachi Blade
Date: 1600-1699
Primary Maker: Unidentified maker
Medium: Steel

Title: Katana Blade And Saya
Date: 1700-1799
Primary Maker: Unidentified maker
Medium: Steel

Title: Armor (Guard For Breastplate)
Date: 1500-1700
Primary Maker: Unidentified maker
Medium: Metal, Textile

Title: Armor
Date: n.d.
Primary Maker: Unidentified maker
Medium: Metal, Fabric

Title: Pulley or bobbin
Primary Maker: Unidentified maker
Medium: Wood

Title: Handle for sword
Primary Maker: Unidentified
maker
Medium: Bronze

**Title: Katana Blade And
Saya**
Date: 1700-1799
Primary Maker: Unidentified
maker
Medium: Steel

**Title: Guard For
Yukinoshita-Do
(Chestplate)**
Date: 1575-1625
Primary Maker: Unidentified
maker
Medium: Metal, Fabric

**Title: Suit of Armor
(Tosei-gusoku style)**
Date: 1650-1775
Primary Maker: Unidentified
maker
Medium: Brass

Title: Armor
Date: n.d.
Primary Maker: Unidentified
maker
Medium: Fabric, Metal, Straw

**Title: Suit of Armor
(Tosei-gusoku style)**
Date: 1650-1775
Primary Maker: Unidentified
maker
Medium: Metal, Fabric

Title: Projectile point
Primary Maker: Unidentified
maker
Medium: Wood

**Title: Baton (Dance
Wand)**
Primary Maker: Unidentified
maker
Medium: Wood

Title: Ancestor Figure
Primary Maker: Unidentified
maker
Medium: Wood

Title: Katana Blade And Saya

Date: 1800

Primary Maker: Unidentified maker

Medium: Steel

Title: Armor (Guard For Breastplate)

Date: 1500-1700

Primary Maker: Unidentified maker

Medium: Metal, Textile

Title: Guard For Breastplate

Date: 1500-1700

Primary Maker: Unidentified maker

Medium: Metal, Textile

Title: Suit of Armor (Tosei-gusoku style)

Date: 1650-1775

Primary Maker: Unidentified maker

Medium: Brass

Title: Armor

Date: 1500-1700

Primary Maker: Unidentified maker

Medium: Metal, Fabric

Title: Katana Blade And Saya

Date: 1600-1699

Primary Maker: Unidentified maker

Medium: Steel

Title: Shinto Katana Blade

Date: 1650

Primary Maker: Unidentified maker

Medium: Steel

Title: Helmet (Yukinoshita-Do Style)

Date: 1575-1625

Primary Maker: Unidentified maker

Medium: Metal, Fabric

Title: Handle

Primary Maker: Unidentified maker

Medium: Wood

Title: Katana Blade And Saya

Date: 1600-1700

Primary Maker: Unidentified maker

Medium: Steel

Title: Katana Blade And Saya

Date: 1600-1700

Primary Maker: Unidentified maker

Medium: Steel

Title: Suit of Armor (Tosei-gusoku style)

Date: 1650-1775

Primary Maker: Unidentified maker

Medium: Metal, Fabric

Title: Suit of Armor (Tosei-Gusoku style)

Date: 1650-1775

Primary Maker: Unidentified maker

Medium: Metal

Title: Noh mask

Date: 18th Century

Primary Maker: Unidentified maker

Medium: Carved and painted wood

Title: Baton (Dance Wand)

Primary Maker: Unidentified maker

Medium: Wood

Title: Katana Blade And Saya

Date: 1600-1699

Primary Maker: Unidentified maker

Medium: Steel

Title: Armor

Date: n.d.

Primary Maker: Unidentified maker

Medium: Metal, Fabric

Title: Spear and scabbard

Date: n.d.

Primary Maker: Unidentified maker

Medium: Steel and wood

Title: Projectile point
Primary Maker: Unidentified
maker
Medium: Wood

Title: Bread Tray
Primary Maker: Unidentified
maker
Medium: Wood

**Title: Armor Yukinoshita-
Do (Chestplate With
Three Attached Hanging
Guards)**
Date: 1575-1625
Primary Maker: Unidentified
maker
Medium: Metal, Fabric

**Title: Suit of Armor
(Tosei-Gusoku style)**
Date: 1650-1775
Primary Maker: Unidentified
maker
Medium: Textile

Title: Pulley or bobbin
Primary Maker: Unidentified
maker
Medium: Wood

**Title: Large Guard
(Possibly Shoulder
Guard)**
Date: 1575-1625
Primary Maker: Unidentified
maker
Medium: Metal, Fabric

**Title: Baton (Dance
Wand)**
Primary Maker: Unidentified
maker
Medium: Wood

Title: Bamboo Cylinder
Primary Maker: Unidentified
maker
Medium: Bamboo

**Title: Katana blade and
saya**
Date: 18th century
Primary Maker: Unidentified
maker
Medium: Steel

Title: Tachi Blade And Saya
Date: 1700-1799
Primary Maker: Unidentified maker
Medium: Steel

Title: Shoulder Guard
Date: 1500-1700
Primary Maker: Unidentified maker
Medium: Metal, Fabric

Title: Spear
Date: n.d
Primary Maker: Unidentified maker
Medium: Steel and wood

Title: Ancestor Figure
Primary Maker: Unidentified maker
Medium: Wood

Title: Nuinobe-do and accessories (helmet and back/shoulder assembly)
Date: late 16th - early 17th centuries
Primary Maker: Unidentified maker
Medium: Metal and fabric

Title: Tachi Blade And Saya
Date: 1600-1699
Primary Maker: Unidentified maker
Medium: Steel

Title: Pulley or bobbin
Primary Maker: Unidentified maker
Medium: Wood

Title: Headrest
Primary Maker: Unidentified maker
Medium: Wood

Title: Armor
Date: n.d.
Primary Maker: Unidentified maker
Medium: Metal, Fabric

Title: Kashmir rug

Primary Maker: Unidentified maker

Medium: Wool and silk pile on cotton foundation

Title: Spear

Date: n.d.

Primary Maker: Unidentified maker

Medium: Steel, wood

Title: Quiver

Date: 18th-19th Century

Primary Maker: Unidentified maker

Medium: Cherry wood and bronze with black and gilded leather pouch

Title: Baton (Dance Wand)

Primary Maker: Unidentified maker

Medium: Wood

Title: Projectile point

Primary Maker: Unidentified maker

Medium: Wood

Title: Boat prow

Primary Maker: Unidentified maker

Medium: Wood

Title: Spatula

Primary Maker: Unidentified maker

Medium: Wood

Title: Suit of Armor (Tosei-gusoku style)

Date: 1650-1775

Primary Maker: Unidentified maker

Medium: Metal, Fabric

Title: Bread Tray

Primary Maker: Unidentified maker

Medium: Wood

Title: Katana Blade And Saya

Date: 1800-1899

Primary Maker: Unidentified maker

Medium: Steel

Title: Suit of Armor (Tosei-gusoku style)

Date: 1650-1775

Primary Maker: Unidentified maker

Medium: Brass

Title: Armor

Date: n.d.

Primary Maker: Unidentified maker

Medium: Metal, Fabric

Title: Ancestor Figure

Primary Maker: Unidentified maker

Medium: Wood

Title: Katana Blade And Saya

Date: 1600-1699

Primary Maker: Unidentified maker

Medium: Steel

Title: Ancestor Figure

Primary Maker: Unidentified maker

Medium: Wood

Title: Armor

Date: 1500-1700

Primary Maker: Unidentified maker

Medium: Metal, Fabric

Title: Suit of Armor (Tosei-gusoku style)

Date: 1650-1775

Primary Maker: Unidentified maker

Medium: Metal, Fabric

Title: Handle

Primary Maker: Unidentified maker

Medium: Wood

Title: Armor
Date: n.d.
Primary Maker: Unidentified maker
Medium: Metal

Title: Armor
Date: 1500-1700
Primary Maker: Unidentified maker
Medium: Metal, Fabric

Title: Katana Blade And Saya
Date: 1800-1899
Primary Maker: Unidentified maker
Medium: Steel

Title: Guard For Breastplate
Date: 1500-1700
Primary Maker: Unidentified maker
Medium: Metal, Textile

Title: Suit of Armor (Tosei-gusoku style)
Date: 1650-1775
Primary Maker: Unidentified maker
Medium: Metal, Fabric

Title: Katana blade
Date: 1912-1926
Primary Maker: Unidentified maker
Medium: Steel, wood, iron, and leather

Title: Baton (Dance Wand)
Primary Maker: Unidentified maker
Medium: Wood

Title: Sword blade
Primary Maker: Unidentified maker
Medium: Steel

Title: Armor
Date: 1500-1700
Primary Maker: Unidentified maker
Medium: Metal, Fabric

Title: Guard For Yukinoshita-Do (Chestplate)
Date: 1575-1625
Primary Maker: Unidentified maker
Medium: Metal, Fabric

Title: Projectile point
Primary Maker: Unidentified maker
Medium: Wood

Title: Suit of Armor (Tosei-gusoku style)
Date: 1650-1775
Primary Maker: Unidentified maker
Medium: Metal, Fabric

Title: Armor
Date: 1500-1700
Primary Maker: Unidentified maker
Medium: Metal, Fabric

Title: Suit of Armor (Tosei-gusoku style)
Date: 1650-1775
Primary Maker: Unidentified maker
Medium: Metal And Fabric

Title: Armor
Date: 1500-1700
Primary Maker: Unidentified maker
Medium: Metal, Fabric

Title: Nuinobe-do and accessories (face/throat guard)
Date: late 16th - early 17th centuries
Primary Maker: Unidentified maker
Medium: Metal, Fabric

Title: Suit of Armor (Tosei-Gusoku Style)
Date: 1650-1775
Primary Maker: Unidentified maker
Medium: Metal

Title: Ancestor Figure
Primary Maker: Unidentified maker
Medium: Wood

Title: Guard For Breastplate

Date: 1500-1700

Primary Maker: Unidentified maker

Medium: Metal, Textile

Title: Katana Blade And Saya

Date: 1800-1840

Primary Maker: Unidentified maker

Medium: Steel



Title: untitled [woman on bed near window]

Date: 20th Century

Primary Maker: Unidentified maker

Medium: Woodcut on paper mounted on board



Title: Beauty on a Bench, Fifth Month from Ukiyo Bijin Jnikagetsu (Beauties of the floating world for the twelve months)

Date: unknown

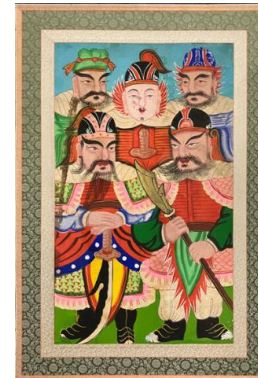
Primary Maker: Unidentified maker

Medium: Color woodblock print

Title: Actor as Female Ghost

Primary Maker: Unidentified maker

Medium: Color woodblock on paper



Title: Untitled (Buddha With Four Attendants)

Date: 1850 - 1950 CE

Primary Maker: Unknown artist, Korean, Chosun dynasty (1392-1910)

Medium: Gouache on silk



Title: Untitled (Diety With Four Attendants)

Date: 1850-1950 CE

Primary Maker: Unknown artist, Korean, Chosun dynasty (1392-1910)

Medium: Gouache on silk



Title: Shrimp

Date: 19th cent.

Primary Maker: Unknown artist

Medium: Sirimono woodblock



Title: Lectern, Lantern And Drawing

Date: 19th cent.

Primary Maker: Unknown artist

Medium: Sirimono woodblock



Title: Hill Jar With Lid

Date: 206 BCE-220 CE

Primary Maker: Unknown
maker

Medium: Earthenware with
green glaze

Title: Chang-Sha-Yao

Glazed Jug

Date: 618-906

Primary Maker: Unknown
Maker

Medium: Ceramic

Title: Covered Jar

Date: 1644-1911

Primary Maker: Unknown
maker

Medium: Glazed Porcelain
With Wooden Lid

Title: Hu

Date: 202-220

Primary Maker: Unknown
maker

Medium: Earthenware With
Copper Oxide Glaze

Title: Equestrian Figure

Date: 206-220

Primary Maker: Unknown
maker

Medium: Ceramic With Traces
Of Pigment

Title: Standing Figure

Date: 557-581 CE

Primary Maker: Unknown
maker

Medium: Earthenware with
pigment

**Title: Cocoon Shaped
Vessel**

Date: 202-220

Primary Maker: Unknown
maker

Medium: Unglazed Earthen-
Ware With Traces Of Mineral
Pigment

**Title: Ovoid Pot (Cocoon
Vessel)**

Date: 206-220

Primary Maker: Unknown
Maker

Medium: Earthenware

Title: Maiping Vase

Date: ca. 1368-1644

Primary Maker: Unknown
maker

Medium: Stoneware With Blue
And Grey Glazes

Title: Hu

Date: 25-220

Primary Maker: Unknown
Maker

Medium: Earthenware With
Dark Green Lead Slip

Title: Plump Lady

Date: 618-907

Primary Maker: Unknown
maker

Medium: Ceramic With Traces
Of Pigment

**Title: Infantry Soldier
Figure**

Date: 206 BCE-23 CE

Primary Maker: Unknown
Maker

Medium: Ceramic with pigment



**Title: Wall shelf or
scone**

Date: n.d.

Primary Maker: Unknown
maker

Medium: Hand-painted wood

Title: Ivory Brooch

Date: n.d.

Primary Maker: Unknown
maker

Medium: Ivory

Title: Horse Head

Date: n.d.

Primary Maker: Unknown
Maker

Medium: Earthenware



Title: Tatsumi Roko

Primary Maker: Kitagawa
Utamaro

Medium: Color woodblock
print (facsimile)



Title: O'Kita of Naniwa-Ya

Primary Maker: Kitagawa
Utamaro

Medium: Color woodblock
print (facsimile)



**Title: Woman Combing
Her Hair, from the series
"Ten Physiognomies of
Women"**

Primary Maker: Kitagawa
Utamaro

Medium: Color woodblock
print (facsimile) on laid Japan
paper



Title: Coquettish Type, from Ten Types of Women's Physiognomies

Date: 1792-1793

Primary Maker: Kitagawa Utamaro

Medium: Color woodblock print (facsimile) white mica ground



Title: Teppo, Rifle, from Hokkoku Goshikizumi, "Five Colors of Ink in the North"

Primary Maker: Kitagawa Utamaro

Medium: Color woodblock print (facsimile)



Title: Drawing Water from a Well

Date: 1807

Primary Maker: Kitagawa Utamaro

Medium: Color woodblock print



Title: O'Hisa of Takashima-Ya

Primary Maker: Kitagawa Utamaro

Medium: Color woodblock print (facsimile) with white mica ground



Title: Beauty Reading Letter, from Ten Aspects of Women

Primary Maker: Kitagawa Utamaro

Medium: Color woodblock print (facsimile)

Title: The Picnickers

Primary Maker: Kitagawa Utamaro

Medium: Color woodblock on paper



Title: Hanazuma of the Hyogoya

Primary Maker: Kitagawa Utamaro

Medium: Color woodblock print (facsimile)



Title: Renraimonki; (Design of) Connected Flower (Teacup with abstract flower design)

Date: c. 1990

Primary Maker: Morihiro Wada

Medium: Stoneware with white and gray slip

Title: Triptych: Women Engaged in Traditional Accomplishments

Date: c. 1885

Primary Maker: Nobukazu Watanabe

Medium: Color woodblock on paper

Title: Christmas
Primary Maker: Sadao Watanabe
Medium: Stencil on paper

Title: The Fish
Primary Maker: Zao Wou-ki
Medium: Color woodcut on paper



Title: Platter
Date: 1996
Primary Maker: Shiman Yamada
Medium: Stoneware

Title: Mt. Hotaka at Daybreak
Date: 1957
Primary Maker: Susumu Yamaguchi
Medium: Color aquatint on wove paper



Title: Street Scene
Date: 1982
Primary Maker: Yu Xiao Yang
Medium: Silver gelatin print on paper

Title: Black Flower
Primary Maker: Hideo Yoshihara
Medium: Color lithograph on paper



Title: Orb-shaped sculpture
Date: 2017
Primary Maker: KIMURA Yoshiro
Medium: Porcelain with blue glaze



Title: Act 7 of Chushingura
Date: mid 1840s
Primary Maker: Ichimosai Yoshitora
Medium: Color woodblock print



Title: Princess Terute, The Lover of Oguri Sukeshige
Primary Maker: Ichimosai Yoshitora
Medium: Color woodblock print



Title: Act 10 of Chushingura

Date: mid 1840s

Primary Maker: Ichimosai Yoshitora

Medium: Color woodblock print



Title: The Geisha Karu of Komatsuya-Kita Shinchi Bon Odo

Date: 1855

Primary Maker: Yoshitoyo

Medium: Color woodblock print

Title: Minamoto Yorimitsu and His Retainers Find Tamavare Seated by a Dragon

Date: 1858

Primary Maker: Ichiesa Yoshitsuya

Medium: Color woodblock on paper

Title: Nao (bronze bell)

Date: 1000-1200 C.E.

Medium: Bronze

Title: Jug

Date: 1100-1279

Medium: Stoneware

Title: Female Attendant Figure

Date: 25-220

Medium: Earthenware With Polychrome Traces

Title: Chinese Export Dinner Service with the Arms of Scott (96 parts)

Date: 1745

Medium: Porcelain

Title: Yang-Shao Double-Handled Urn

Date: n.d.

Medium: Earthenware With Mineral Paint



Title: Equestrian figure

Date: 618-907 C.E.

Medium: Ceramic with san'cai glaze

Title: Textile from the
Portfolio:Forty
Handwoven Cotton
Textiles from Japan
Date: 1955
Medium: Cotton textile
mounted on wove paper in
intaglio recess, in a multi-fold
box with ivory and bone

Title: Double Handled
Urn
Date: n.d.
Medium: Earthenware