

Basic Report

Title: Ichikoku Bridge in the Eastern Capital, from Thirty-Six Views of Mt. Fuji

Date: 1858

Primary Maker: Utagawa Hiroshige

Medium: Color woodblock on paper (facsimile)

Title: Totsuka, Plate 6 from Famous Places on the Fifty-Three Stations, or The Vertical Tokaido

Date: 1855

Primary Maker: Utagawa Hiroshige

Medium: Color woodblock on paper

Title: Noge and Yokohama in Musashi Province, from Thirty-six Views of Mt. Fuji

Date: 1858

Primary Maker: Utagawa Hiroshige

Medium: Color woodblock on paper (facsimile)



Title: The i River between Suruga and Totomi Provinces, from Thirty-six Views of Mt. Fuji

Date: 1858

Primary Maker: Utagawa Hiroshige

Medium: Color woodblock on paper (facsimile)



Title: Kanbara, from The Fifty-three Stations of the Tkaid

Date: 1833-1834

Primary Maker: Utagawa Hiroshige

Medium: Color woodblock on paper (fascimile)



Title: Twilight Hill at Meguro in the Eastern Capital, from Thirty-six Views of Mt. Fuji

Date: 1858

Primary Maker: Utagawa Hiroshige

Medium: Color woodblock on paper (facsimile)

Title: Futagawa, Plate 34 from Famous Places on the Fifty-Three Stations, or The Vertical Tokaido

Date: 1855

Primary Maker: Utagawa Hiroshige

Medium: Color woodblock on paper

Title: Otsu, Plate 54 from Famous Places on the Fifty-Three Stations, or The Vertical Tokaido

Date: 1855

Primary Maker: Utagawa Hiroshige

Medium: Color woodblock on paper



Title: The Sumida Embankment in the Eastern Capital, from Thirty-six Views of Mt. Fuji

Date: 1858

Primary Maker: Utagawa Hiroshige

Medium: Color woodblock on paper (facsimile)



Title: Mt. Asuka in the Eastern Capital, from Thirty-six Views of Mt. Fuji
Date: 1858
Primary Maker: Utagawa Hiroshige
Medium: Color woodblock on paper (facsimile)



Title: The Sagami River, from Thirty-six Views of Mt. Fuji
Date: 1858
Primary Maker: Utagawa Hiroshige
Medium: Color woodblock on paper (facsimile)

Title: Shirasuka, Plate 33 from Famous Places on the Fifty-Three Stations, or The Vertical Tokaido
Date: 1855
Primary Maker: Utagawa Hiroshige
Medium: Color woodblock on paper



Title: Nihonbashi and Edobashi Bridges, from Yaruadaye Figure Set
Date: 1853
Primary Maker: Utagawa Hiroshige
Medium: Color woodblock on paper



Title: The Entrance Gate at Enoshima in Sagami Province, from Thirty-six Views of Mt. Fuji
Date: 1858
Primary Maker: Utagawa Hiroshige
Medium: Color woodblock on paper (facsimile)



Title: Wild Goose Hill and the Tone River, from Thirty-six Views of Mt. Fuji
Date: 1858
Primary Maker: Utagawa Hiroshige
Medium: Color woodblock on paper (facsimile)

Title: Tsuchiyama, Plate 50 from Famous Places on the Fifty-Three Stations, or The Vertical Tokaido
Date: 1855
Primary Maker: Utagawa Hiroshige
Medium: Color woodblock on paper



Title: Lake at Hakone, from Thirty-six Views of Mt. Fuji
Date: 1858
Primary Maker: Utagawa Hiroshige
Medium: Color woodblock on paper (facsimile)

Title: Cherry Blossoms at Honmoku in Musashi Province, from Thirty-six Views of Mt. Fuji
Date: 1858
Primary Maker: Utagawa Hiroshige
Medium: Color woodblock on paper (facsimile)

Title: Shono, Plate 46
from Famous Places on
the Fifty-Three Stations,
or The Vertical Tokaido

Date: 1855

Primary Maker: Utagawa
Hiroshige

Medium: Color woodblock on
paper

Title: Kyoto, Plate 55
from Famous Places on
the Fifty-Three Stations,
or The Vertical Tokaido

Date: 1855

Primary Maker: Utagawa
Hiroshige

Medium: Color woodblock on
paper

Title: Fujisawa, Plate 7
from Famous Places on
The Fifty-Three Stations,
or The Vertical Tokaido

Date: 1855

Primary Maker: Utagawa
Hiroshige

Medium: Color woodblock on
paper

Title: The tsuki Plain in
Kai Province, from
Thirty-six Views of Mt.
Fuji

Date: 1858

Primary Maker: Utagawa
Hiroshige

Medium: Color woodblock on
paper (facsimile)

Title: Ishike, Plate 52
from Famous Places on
the Fifty-Three Stations,
or The Vertical Tokaido

Date: 1855

Primary Maker: Utagawa
Hiroshige

Medium: Color woodblock on
paper

Title: Numazu, Plate 13
from Famous Places on
the Fifty-Three Stations,
or The Vertical Tokaido

Date: 1855

Primary Maker: Utagawa
Hiroshige

Medium: Color woodblock on
paper



Title: Fugaku
Sanjurokkei, title page
from Thirty-six Views of
Mt. Fuji

Primary Maker: Utagawa
Hiroshige

Medium: Color woodblock on
paper



Title: Narumi, Plate 41
from Famous Places on
the Fifty-Three Stations,
or The Vertical Tokaido

Date: 1855

Primary Maker: Utagawa
Hiroshige

Medium: Color woodblock on
paper

Title: Futami Bay in Ise
Province, from Thirty-six
Views of Mt. Fuji

Date: 1858

Primary Maker: Utagawa
Hiroshige

Medium: Color woodblock on
paper (facsimile)



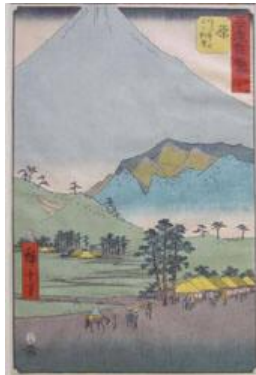
Title: Kuroto Bay in Kazusa Province, from Thirty-six Views of Mt. Fuji
Date: 1858
Primary Maker: Utagawa Hiroshige
Medium: Color woodblock on paper (facsimile)



Title: Hakone, Plate 11 from Famous Places on the Fifty-Three Stations, or The Vertical Tokaido
Date: 1855
Primary Maker: Utagawa Hiroshige
Medium: Color woodblock on paper

Title: Okazaki, Plate 39 from Famous Places on the Fifty-Three Stations, or The Vertical Tokaido
Date: 1855
Primary Maker: Utagawa Hiroshige
Medium: Color woodblock on paper

Title: Nihonbashi, Plate 1 from Famous Places on the Fifty-Three Stations, or The Vertical Tokaido
Date: 1855
Primary Maker: Utagawa Hiroshige
Medium: Color woodblock on paper



Title: Hara, Plate 14 from Famous Places on the Fifty-Three Stations, or The Vertical Tokaido
Date: 1855
Primary Maker: Utagawa Hiroshige
Medium: Color woodblock on paper



Title: Dog Eye Pass in Kai Province, from Thirty-six Views of Mt. Fuji
Date: 1858
Primary Maker: Utagawa Hiroshige
Medium: Color woodblock on paper (facsimile)

Title: Shinagawa, Plate 2 from Famous Places on the Fifty-Three Stations, or The Vertical Tokaido
Date: 1855
Primary Maker: Utagawa Hiroshige
Medium: Color woodblock on paper

Title: Kameyama, Plate 47 from Famous Places on the Fifty-Three Stations, or The Vertical Tokaido
Date: 1855
Primary Maker: Utagawa Hiroshige
Medium: Color woodblock on paper

Title: Yoshida, Plate 35 from Famous Places on the Fifty-Three Stations, or The Vertical Tokaido
Date: 1855
Primary Maker: Utagawa Hiroshige
Medium: Color woodblock on paper

Title: Minaguchi, Plate 51 from Famous Places on the Fifty-Three Stations, or The Vertical Tokaido

Date: 1855

Primary Maker: Utagawa Hiroshige

Medium: Color woodblock on paper

Title: Hiratsuka, Plate 8 from Famous Places on the Fifty-Three Stations, or The Vertical Tokaido

Date: 1855

Primary Maker: Utagawa Hiroshige

Medium: Color woodblock on paper



Title: Sukiyagashi in the Eastern Capital, from Thirty-Six Views of Mt. Fuji

Date: 1858

Primary Maker: Utagawa Hiroshige

Medium: Color woodblock on paper (facsimile)



Title: Shiojiri Pass in Shinano Province, from Thirty-six Views of Mt. Fuji

Date: 1858

Primary Maker: Utagawa Hiroshige

Medium: Color woodblock on paper (facsimile)



Title: The Izu Mountains, from Thirty-six Views of Mt. Fuji

Date: 1858

Primary Maker: Utagawa Hiroshige

Medium: Color woodblock on paper (facsimile)



Title: Koshigaya in Musashi Province, from Thirty-six Views of Mt. Fuji

Date: 1858

Primary Maker: Utagawa Hiroshige

Medium: Color woodblock on paper (facsimile)



Title: Priests in Kii Province (fragment from a Harimaze sheet illustrating the provinces of Japan)
Primary Maker: Utagawa Hiroshige
Medium: Color woodblock on paper

Title: Odawara, Plate 10 from Famous Places on the Fifty-Three Stations or The Vertical Tokaido
Date: 1855
Primary Maker: Utagawa Hiroshige
Medium: Color woodblock print on paper

Title: Kanagawa, Plate 4 from Famous Places on the Fifty-Three Stations, or The Vertical Tokaido
Date: 1855
Primary Maker: Utagawa Hiroshige
Medium: Color woodblock on paper



Title: The Eastern Temple at Asakusa, from Famous Places In Edo or The Yamadaya Set
Date: 1854
Primary Maker: Utagawa Hiroshige
Medium: Color woodblock print on paper

Title: Nihonbashi, Plate 1 from Famous Places on the Fifty-Three Stations, or The Vertical Tokaido
Date: 1855
Primary Maker: Utagawa Hiroshige
Medium: Color woodblock on paper



Title: Chiryu, Plate 40 from Famous Places on the Fifty-Three Stations, or The Vertical Tokaido
Date: 1855
Primary Maker: Utagawa Hiroshige
Medium: Color woodblock on paper

Title: Arai, Plate 32 from Famous Places on the Fifty-Three Stations, or The Vertical Tokaido
Date: 1855
Primary Maker: Utagawa Hiroshige
Medium: Color woodblock on paper

Title: Ferry Boat at Kuwana, Plate 43 from Famous Places on the Fifty-Three Stations, or The Vertical Tokaido
Date: 1855
Primary Maker: Utagawa Hiroshige
Medium: Color woodblock on paper

Title: Hodogaya, Plate 5 from Famous Places on the Fifty-Three Stations, or The Vertical Tokaido
Date: 1855
Primary Maker: Utagawa Hiroshige
Medium: Color woodblock on paper

**Title: Okabe, Plate 22
from Famous Places on the
Fifty-Three Stations, or
The Vertical Tokaido**

Date: 1855

Primary Maker: Utagawa
Hiroshige

Medium: Color woodblock on
paper

**Title: Yui, Plate 17 from
Famous Places on the
Fifty-Three Stations, or
The Vertical Tokaido**

Date: 1855

Primary Maker: Utagawa
Hiroshige

Medium: Color woodblock on
paper

**Title: Kawazaki, Plate 3
from Famous Places on
the Fifty-Three Stations,
or The Vertical Tokaido**

Date: 1855

Primary Maker: Utagawa
Hiroshige

Medium: Color woodblock on
paper



**Title: Fujikawa, Plate 38
from Famous Places on
the Fifty-Three Stations,
or The Vertical Tokaido**

Date: 1855

Primary Maker: Utagawa
Hiroshige

Medium: Color woodblock on
paper

**Title: Kambara, Plate 16
from Famous Places on
the Fifty-Three Stations,
or The Vertical Tokaido**

Date: 1855

Primary Maker: Utagawa
Hiroshige

Medium: Color woodblock on
paper

**Title: Yokkaichi, Plate 44
from Famous Places on
the Fifty-Three Stations,
or The Vertical Tokaido**

Date: 1855

Primary Maker: Utagawa
Hiroshige

Medium: Color woodblock on
paper

**Title: Ejiri, Plate 19 from
Famous Places on the
Fifty-Three Stations, or
The Vertical Tokaido**

Date: 1855

Primary Maker: Utagawa
Hiroshige

Medium: Color woodblock on
paper

**Title: Nissaka, Plate 26
from Famous Places on
the Fifty-Three Stations,
or The Vertical Tokaido**

Date: 1855

Primary Maker: Utagawa
Hiroshige

Medium: Color woodblock on
paper

**Title: Miya, Plate 42 from
Famous Places on the
Fifty-Three Stations, or
The Vertical Tokaido**

Date: 1855

Primary Maker: Utagawa
Hiroshige

Medium: Color woodblock on
paper



Title: The Pine Forest of Miho in Suruga Province, from Thirty-six Views of Mt. Fuji

Date: 1858

Primary Maker: Utagawa Hiroshige

Medium: Color woodblock on paper (facsimile)



Title: The Hotohoto Festival at the Great Shrine in Izumo Province, from Famous Views of the 60-odd Provinces

Primary Maker: Utagawa Hiroshige

Medium: Color woodblock on paper

Title: Mitsuke, Plate 29 from Famous Places on the Fifty-Three Stations, or The Vertical Tokaido

Date: 1855

Primary Maker: Utagawa Hiroshige

Medium: Color woodblock on paper



Title: Ryugoku in the Eastern Capital, from Thirty-six Views of Mt. Fuji

Date: 1858

Primary Maker: Utagawa Hiroshige

Medium: Color woodblock on paper (facsimile)

Title: The Sea Off the Miura Peninsula in Sagami Province, from Thirty-six Views of Mt. Fuji

Date: 1858

Primary Maker: Utagawa Hiroshige

Medium: Color woodblock on paper (facsimile)

Title: Ishiyakushi, Plate 45 from Famous Places on the Fifty-Three Stations, or The Vertical Tokaido

Date: 1855

Primary Maker: Utagawa Hiroshige

Medium: Color woodblock on paper

Title: Oiso, Plate 9 from Famous Places on the Fifty-Three Stations, or The Vertical Tokaido

Date: 1855

Primary Maker: Utagawa Hiroshige

Medium: Color woodblock on paper

Title: Hamamatsu, Plate 30 from Famous Places on the Fifty-Three Stations, or The Vertical Tokaido

Date: 1855

Primary Maker: Utagawa Hiroshige

Medium: Color woodblock on paper

Title: Mishima, Plate 12 from Famous Places on the Fifty-Three Stations, or The Vertical Tokaido

Date: 1855

Primary Maker: Utagawa Hiroshige

Medium: Color woodblock on paper

Title: Shimada, Plate 24 from Famous Places on the Fifty-Three Stations, or The Vertical Tokaido

Date: 1855

Primary Maker: Utagawa Hiroshige

Medium: Color woodblock on paper



Title: Evening Moon at Ryogoku, from Famous Places in Edo

Primary Maker: Utagawa Hiroshige

Medium: Color woodblock print on paper, 20th century facsimile

Title: Okitsu, Plate 18 from Famous Places on the Fifty-Three Stations, or The Vertical Tokaido

Date: 1855

Primary Maker: Utagawa Hiroshige

Medium: Color woodblock on paper



Title: Ochanomizu in the Eastern Capital, from Thirty-six Views of Mt. Fuji

Date: 1858

Primary Maker: Utagawa Hiroshige

Medium: Color woodblock on paper (facsimile)

Title: Mt. Kan in Kazusa Province, from Thirty-six Views of Mt. Fuji

Date: 1858

Primary Maker: Utagawa Hiroshige

Medium: Color woodblock on paper (facsimile)



Title: The Seven Ri Beach in Sagami Province, from Thirty-six Views of Mt. Fuji

Date: 1858

Primary Maker: Utagawa Hiroshige

Medium: Color woodblock on paper (facsimile)



Title: The Sea off Satta in Suruga Province, from Thirty-six Views of Mt. Fuji

Date: 1858

Primary Maker: Utagawa Hiroshige

Medium: Color woodblock on paper (facsimile)

Title: Ishiyakushi, Plate 45 from Famous Places on the Fifty-Three Stations, or The Vertical Tokaido

Date: 1855

Primary Maker: Utagawa Hiroshige

Medium: Color woodblock on paper

Title: Fuchu, Plate 20 from Famous Places on the Fifty-Three Stations, or The Vertical Tokaido

Date: 1855

Primary Maker: Utagawa Hiroshige

Medium: Color woodblock on paper

Title: Akasaka, from The Fifty-three Stations of the Tkaid

Date: 1832

Primary Maker: Utagawa Hiroshige

Medium: Woodblock color print



Title: Summer Shower at Ohashi Bridge, from One Hundred Views of Edo

Primary Maker: Utagawa Hiroshige

Medium: Color woodblock on paper (fascimile)



Title: Fuji on the left of the Tkaid Road, from Thirty-six Views of Mt. Fuji

Date: 1858

Primary Maker: Utagawa Hiroshige

Medium: Color woodblock on paper

Title: Mariko, Plate 21 from Famous Places on the Fifty-Three Stations, or The Vertical Tokaido

Date: 1855

Primary Maker: Utagawa Hiroshige

Medium: Color woodblock on paper



Title: Senba Station, Plate 32 from the series Sixty-Nine Stations of the Kisokaido

Date: c. 1835-48

Primary Maker: Utagawa Hiroshige

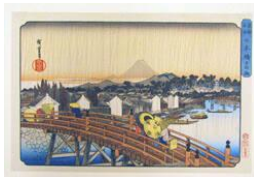
Medium: Color woodblock on paper (fascimile)

Title: Maizaka, Plate 31 from Famous Places on the Fifty-Three Stations, or The Vertical Tokaido

Date: 1855

Primary Maker: Utagawa Hiroshige

Medium: Color woodblock on paper



Title: Sunshower at Nihonbashi

Date: 1833-34

Primary Maker: Utagawa Hiroshige

Medium: Multicolor woodblock print

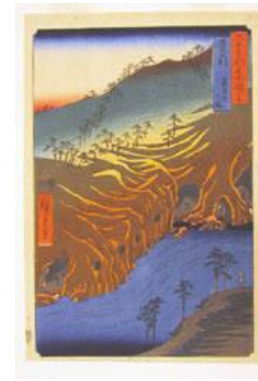


Title: Mt. Fuji fom the Suruga District in the Eastern Capital, Plate 2 from the series Thirty-Six Views of Mt. Fuji

Date: 1858

Primary Maker: Utagawa Hiroshige

Medium: Multicolor woodblock print



Title: The Road Below the Rakan Temple in Buzen Province, from the series Pictures of Famous Places in the Sixty-odd Provinces

Date: 1854

Primary Maker: Utagawa Hiroshige

Medium: Multicolor woodblock print



Title: Kogane Plain in Shimsa Province, from Thirty-six View of Mt. Fuji

Date: 1858

Primary Maker: Utagawa Hiroshige

Medium: Multicolor woodblock print



Title: The Teahouse with the View of Mt. Fuji from Zshigaya, from the series Thirty-six Views of Mt. Fuji

Date: 1858

Primary Maker: Utagawa Hiroshige

Medium: Multicolor woodblock print



Title: Off Tsukuda Island in the Eastern Capital, from Thirty-six Views of Mt. Fuji

Date: 1858

Primary Maker: Utagawa Hiroshige

Medium: Multicolor woodblock print