

# Basic Report

---



**Title:** Sunshower at Nihonbashi  
**Date:** 1833-34  
**Primary Maker:** Utagawa Hiroshige  
**Medium:** Multicolor woodblock print

**Title:** Ichikoku Bridge in the Eastern Capital, from Thirty-Six Views of Mt. Fuji  
**Date:** 1858  
**Primary Maker:** Utagawa Hiroshige  
**Medium:** Color woodblock on paper (facsimile)

**Title:** Totsuka, Plate 6 from Famous Places on the Fifty-Three Stations, or The Vertical Tokaido  
**Date:** 1855  
**Primary Maker:** Utagawa Hiroshige  
**Medium:** Color woodblock on paper



**Title:** Mt. Fuji from the Suruga District in the Eastern Capital, Plate 2 from the series Thirty-Six Views of Mt. Fuji  
**Date:** 1858  
**Primary Maker:** Utagawa Hiroshige  
**Medium:** Multicolor woodblock print

**Title:** Noge and Yokohama in Musashi Province, from Thirty-six Views of Mt. Fuji  
**Date:** 1858  
**Primary Maker:** Utagawa Hiroshige  
**Medium:** Color woodblock on paper (facsimile)



**Title:** The i River between Suruga and Totomi Provinces, from Thirty-six Views of Mt. Fuji  
**Date:** 1858  
**Primary Maker:** Utagawa Hiroshige  
**Medium:** Color woodblock on paper (facsimile)



**Title:** Kanbara, from The Fifty-three Stations of the Tkaid  
**Date:** 1833-1834  
**Primary Maker:** Utagawa Hiroshige  
**Medium:** Color woodblock on paper (facsimile)



**Title:** Twilight Hill at Meguro in the Eastern Capital, from Thirty-six Views of Mt. Fuji  
**Date:** 1858  
**Primary Maker:** Utagawa Hiroshige  
**Medium:** Color woodblock on paper (facsimile)

**Title:** Futagawa, Plate 34 from Famous Places on the Fifty-Three Stations, or The Vertical Tokaido  
**Date:** 1855  
**Primary Maker:** Utagawa Hiroshige  
**Medium:** Color woodblock on paper

**Title:** Otsu, Plate 54 from Famous Places on the Fifty-Three Stations, or The Vertical Tokaido

**Date:** 1855

**Primary Maker:** Utagawa Hiroshige

**Medium:** Color woodblock on paper



**Title:** The Sumida Embankment in the Eastern Capital, from Thirty-six Views of Mt. Fuji

**Date:** 1858

**Primary Maker:** Utagawa Hiroshige

**Medium:** Color woodblock on paper (facsimile)



**Title:** Mt. Asuka in the Eastern Capital, from Thirty-six Views of Mt. Fuji

**Date:** 1858

**Primary Maker:** Utagawa Hiroshige

**Medium:** Color woodblock on paper (facsimile)



**Title:** The Sagami River, from Thirty-six Views of Mt. Fuji

**Date:** 1858

**Primary Maker:** Utagawa Hiroshige

**Medium:** Color woodblock on paper (facsimile)

**Title:** Shirasuka, Plate 33 from Famous Places on the Fifty-Three Stations, or The Vertical Tokaido

**Date:** 1855

**Primary Maker:** Utagawa Hiroshige

**Medium:** Color woodblock on paper



**Title:** Nihonbashi and Edobashi Bridges, from Yaruadaye Figure Set

**Date:** 1853

**Primary Maker:** Utagawa Hiroshige

**Medium:** Color woodblock on paper



**Title:** The Entrance Gate at Enoshima in Sagami Province, from Thirty-six Views of Mt. Fuji

**Date:** 1858

**Primary Maker:** Utagawa Hiroshige

**Medium:** Color woodblock on paper (facsimile)



**Title:** Wild Goose Hill and the Tone River, from Thirty-six Views of Mt. Fuji

**Date:** 1858

**Primary Maker:** Utagawa Hiroshige

**Medium:** Color woodblock on paper (facsimile)

**Title:** Tsuchiyama, Plate 50 from Famous Places on the Fifty-Three Stations, or The Vertical Tokaido

**Date:** 1855

**Primary Maker:** Utagawa Hiroshige

**Medium:** Color woodblock on paper



**Title:** Lake at Hakone, from Thirty-six Views of Mt. Fuji

**Date:** 1858

**Primary Maker:** Utagawa Hiroshige

**Medium:** Color woodblock on paper (facsimile)

**Title:** Cherry Blossoms at Honmoku in Musashi Province, from Thirty-six Views of Mt. Fuji

**Date:** 1858

**Primary Maker:** Utagawa Hiroshige

**Medium:** Color woodblock on paper (facsimile)

**Title:** Shono, Plate 46 from Famous Places on the Fifty-Three Stations, or The Vertical Tokaido

**Date:** 1855

**Primary Maker:** Utagawa Hiroshige

**Medium:** Color woodblock on paper



**Title:** The Road Below the Rakan Temple in Buzen Province, from the series Pictures of Famous Places in the Sixty-odd Provinces

**Date:** 1854

**Primary Maker:** Utagawa Hiroshige

**Medium:** Multicolor woodblock print

**Title:** Kyoto, Plate 55 from Famous Places on the Fifty-Three Stations, or The Vertical Tokaido

**Date:** 1855

**Primary Maker:** Utagawa Hiroshige

**Medium:** Color woodblock on paper

**Title:** Fujisawa, Plate 7 from Famous Places on The Fifty-Three Stations, or The Vertical Tokaido

**Date:** 1855

**Primary Maker:** Utagawa Hiroshige

**Medium:** Color woodblock on paper

**Title:** The tsuki Plain in Kai Province, from Thirty-six Views of Mt. Fuji

**Date:** 1858

**Primary Maker:** Utagawa Hiroshige

**Medium:** Color woodblock on paper (facsimile)

**Title:** Ishike, Plate 52 from Famous Places on the Fifty-Three Stations, or The Vertical Tokaido

**Date:** 1855

**Primary Maker:** Utagawa Hiroshige

**Medium:** Color woodblock on paper

**Title:** Numazu, Plate 13 from Famous Places on the Fifty-Three Stations, or The Vertical Tokaido

**Date:** 1855

**Primary Maker:** Utagawa Hiroshige

**Medium:** Color woodblock on paper



**Title:** Fugaku Sanjurokkei, title page from Thirty-six Views of Mt. Fuji  
**Primary Maker:** Utagawa Hiroshige  
**Medium:** Color woodblock on paper

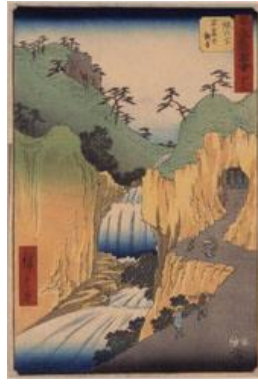


**Title:** Narumi, Plate 41 from Famous Places on the Fifty-Three Stations, or The Vertical Tokaido  
**Date:** 1855  
**Primary Maker:** Utagawa Hiroshige  
**Medium:** Color woodblock on paper

**Title:** Futami Bay in Ise Province, from Thirty-six Views of Mt. Fuji  
**Date:** 1858  
**Primary Maker:** Utagawa Hiroshige  
**Medium:** Color woodblock on paper (facsimile)



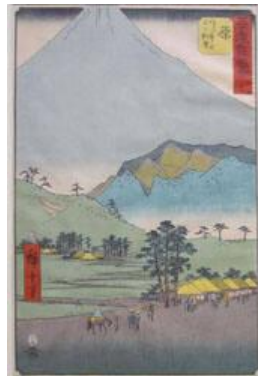
**Title:** Kuroto Bay in Kazusa Province, from Thirty-six Views of Mt. Fuji  
**Date:** 1858  
**Primary Maker:** Utagawa Hiroshige  
**Medium:** Color woodblock on paper (facsimile)



**Title:** Hakone, Plate 11 from Famous Places on the Fifty-Three Stations, or The Vertical Tokaido  
**Date:** 1855  
**Primary Maker:** Utagawa Hiroshige  
**Medium:** Color woodblock on paper

**Title:** Okazaki, Plate 39 from Famous Places on the Fifty-Three Stations, or The Vertical Tokaido  
**Date:** 1855  
**Primary Maker:** Utagawa Hiroshige  
**Medium:** Color woodblock on paper

**Title:** Nihonbashi, Plate 1 from Famous Places on the Fifty-Three Stations, or The Vertical Tokaido  
**Date:** 1855  
**Primary Maker:** Utagawa Hiroshige  
**Medium:** Color woodblock on paper



**Title:** Hara, Plate 14 from Famous Places on the Fifty-Three Stations, or The Vertical Tokaido  
**Date:** 1855  
**Primary Maker:** Utagawa Hiroshige  
**Medium:** Color woodblock on paper



**Title:** Dog Eye Pass in Kai Province, from Thirty-six Views of Mt. Fuji  
**Date:** 1858  
**Primary Maker:** Utagawa Hiroshige  
**Medium:** Color woodblock on paper (facsimile)



**Title:** Shinagawa, Plate 2 from Famous Places on the Fifty-Three Stations, or The Vertical Tokaido

**Date:** 1855

**Primary Maker:** Utagawa Hiroshige

**Medium:** Color woodblock on paper

**Title:** Kameyama, Plate 47 from Famous Places on the Fifty-Three Stations, or The Vertical Tokaido

**Date:** 1855

**Primary Maker:** Utagawa Hiroshige

**Medium:** Color woodblock on paper

**Title:** Yoshida, Plate 35 from Famous Places on the Fifty-Three Stations, or The Vertical Tokaido

**Date:** 1855

**Primary Maker:** Utagawa Hiroshige

**Medium:** Color woodblock on paper

**Title:** Minaguchi, Plate 51 from Famous Places on the Fifty-Three Stations, or The Vertical Tokaido

**Date:** 1855

**Primary Maker:** Utagawa Hiroshige

**Medium:** Color woodblock on paper

**Title:** Hiratsuka, Plate 8 from Famous Places on the Fifty-Three Stations, or The Vertical Tokaido

**Date:** 1855

**Primary Maker:** Utagawa Hiroshige

**Medium:** Color woodblock on paper



**Title:** Sukiya-gashi in the Eastern Capital, from Thirty-Six Views of Mt. Fuji

**Date:** 1858

**Primary Maker:** Utagawa Hiroshige

**Medium:** Color woodblock on paper (facsimile)

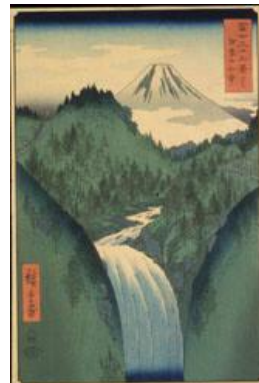


**Title:** Shiojiri Pass in Shinano Province, from Thirty-six Views of Mt. Fuji

**Date:** 1858

**Primary Maker:** Utagawa Hiroshige

**Medium:** Color woodblock on paper (facsimile)



**Title:** The Izu Mountains, from Thirty-six Views of Mt. Fuji

**Date:** 1858

**Primary Maker:** Utagawa Hiroshige

**Medium:** Color woodblock on paper (facsimile)



**Title:** Koshigaya in Musashi Province, from Thirty-six Views of Mt. Fuji

**Date:** 1858

**Primary Maker:** Utagawa Hiroshige

**Medium:** Color woodblock on paper (facsimile)



**Title:** Priests in Kii Province (fragment from a Harimaze sheet illustrating the provinces of Japan)  
**Primary Maker:** Utagawa Hiroshige  
**Medium:** Color woodblock on paper

**Title:** Odawara, Plate 10 from Famous Places on the Fifty-Three Stations or The Vertical Tokaido  
**Date:** 1855  
**Primary Maker:** Utagawa Hiroshige  
**Medium:** Color woodblock print on paper

**Title:** Kanagawa, Plate 4 from Famous Places on the Fifty-Three Stations, or The Vertical Tokaido  
**Date:** 1855  
**Primary Maker:** Utagawa Hiroshige  
**Medium:** Color woodblock on paper



**Title:** The Eastern Temple at Asakusa, from Famous Places In Edo or The Yamadaya Set  
**Date:** 1854  
**Primary Maker:** Utagawa Hiroshige  
**Medium:** Color woodblock print on paper

**Title:** Nihonbashi, Plate 1 from Famous Places on the Fifty-Three Stations, or The Vertical Tokaido  
**Date:** 1855  
**Primary Maker:** Utagawa Hiroshige  
**Medium:** Color woodblock on paper



**Title:** Chiryu, Plate 40 from Famous Places on the Fifty-Three Stations, or The Vertical Tokaido  
**Date:** 1855  
**Primary Maker:** Utagawa Hiroshige  
**Medium:** Color woodblock on paper

**Title:** Arai, Plate 32 from Famous Places on the Fifty-Three Stations, or The Vertical Tokaido

**Date:** 1855

**Primary Maker:** Utagawa Hiroshige

**Medium:** Color woodblock on paper

**Title:** Ferry Boat at Kuwana, Plate 43 from Famous Places on the Fifty-Three Stations, or The Vertical Tokaido

**Date:** 1855

**Primary Maker:** Utagawa Hiroshige

**Medium:** Color woodblock on paper



**Title:** Kogane Plain in Shimsa Province, from Thirty-six View of Mt. Fuji

**Date:** 1858

**Primary Maker:** Utagawa Hiroshige

**Medium:** Multicolor woodblock print

**Title:** Hodogaya, Plate 5 from Famous Places on the Fifty-Three Stations, or The Vertical Tokaido

**Date:** 1855

**Primary Maker:** Utagawa Hiroshige

**Medium:** Color woodblock on paper

**Title:** Okabe, Plate 22 from Famous Places on the Fifty-Three Stations, or The Vertical Tokaido

**Date:** 1855

**Primary Maker:** Utagawa Hiroshige

**Medium:** Color woodblock on paper

**Title:** Yui, Plate 17 from Famous Places on the Fifty-Three Stations, or The Vertical Tokaido

**Date:** 1855

**Primary Maker:** Utagawa Hiroshige

**Medium:** Color woodblock on paper

**Title:** Kawazaki, Plate 3 from Famous Places on the Fifty-Three Stations, or The Vertical Tokaido

**Date:** 1855

**Primary Maker:** Utagawa Hiroshige

**Medium:** Color woodblock on paper



**Title:** Fujikawa, Plate 38 from Famous Places on the Fifty-Three Stations, or The Vertical Tokaido

**Date:** 1855

**Primary Maker:** Utagawa Hiroshige

**Medium:** Color woodblock on paper

**Title:** Kambara, Plate 16 from Famous Places on the Fifty-Three Stations, or The Vertical Tokaido

**Date:** 1855

**Primary Maker:** Utagawa Hiroshige

**Medium:** Color woodblock on paper

**Title:** Yokkaichi, Plate 44 from Famous Places on the Fifty-Three Stations, or The Vertical Tokaido

**Date:** 1855

**Primary Maker:** Utagawa Hiroshige

**Medium:** Color woodblock on paper

**Title:** Ejiri, Plate 19 from Famous Places on the Fifty-Three Stations, or The Vertical Tokaido

**Date:** 1855

**Primary Maker:** Utagawa Hiroshige

**Medium:** Color woodblock on paper

**Title:** Nissaka, Plate 26 from Famous Places on the Fifty-Three Stations, or The Vertical Tokaido

**Date:** 1855

**Primary Maker:** Utagawa Hiroshige

**Medium:** Color woodblock on paper

**Title:** Miya, Plate 42 from Famous Places on the Fifty-Three Stations, or The Vertical Tokaido

**Date:** 1855

**Primary Maker:** Utagawa Hiroshige

**Medium:** Color woodblock on paper



**Title:** The Pine Forest of Miho in Suruga Province, from Thirty-six Views of Mt. Fuji

**Date:** 1858

**Primary Maker:** Utagawa Hiroshige

**Medium:** Color woodblock on paper (facsimile)



**Title:** The Teahouse with the View of Mt. Fuji from Zshigaya, from the series Thirty-six Views of Mt. Fuji

**Date:** 1858

**Primary Maker:** Utagawa Hiroshige

**Medium:** Multicolor woodblock print

**Title:** The Hotohoto Festival at the Great Shrine in Izumo Province, from Famous Views of the 60-odd Provinces

**Primary Maker:** Utagawa Hiroshige

**Medium:** Color woodblock on paper



**Title:** Mitsuke, Plate 29 from Famous Places on the Fifty-Three Stations, or The Vertical Tokaido

**Date:** 1855

**Primary Maker:** Utagawa Hiroshige

**Medium:** Color woodblock on paper



**Title:** Rygoku in the Eastern Capital, from Thirty-six Views of Mt. Fuji

**Date:** 1858

**Primary Maker:** Utagawa Hiroshige

**Medium:** Color woodblock on paper (facsimile)



**Title:** The Sea Off the Miura Peninsula in Sagami Province, from Thirty-six Views of Mt. Fuji

**Date:** 1858

**Primary Maker:** Utagawa Hiroshige

**Medium:** Color woodblock on paper (facsimile)

**Title:** Ishiyakushi, Plate 45 from Famous Places on the Fifty-Three Stations, or The Vertical Tokaido

**Date:** 1855

**Primary Maker:** Utagawa Hiroshige

**Medium:** Color woodblock on paper

**Title:** Oiso, Plate 9 from Famous Places on the Fifty-Three Stations, or The Vertical Tokaido

**Date:** 1855

**Primary Maker:** Utagawa Hiroshige

**Medium:** Color woodblock on paper

**Title:** Hamamatsu, Plate 30 from Famous Places on the Fifty-Three Stations, or The Vertical Tokaido

**Date:** 1855

**Primary Maker:** Utagawa Hiroshige

**Medium:** Color woodblock on paper

**Title:** Mishima, Plate 12 from Famous Places on the Fifty-Three Stations, or The Vertical Tokaido

**Date:** 1855

**Primary Maker:** Utagawa Hiroshige

**Medium:** Color woodblock on paper

**Title:** Shimada, Plate 24 from Famous Places on the Fifty-Three Stations, or The Vertical Tokaido

**Date:** 1855

**Primary Maker:** Utagawa Hiroshige

**Medium:** Color woodblock on paper



**Title:** Evening Moon at Ryogoku, from Famous Places in Edo

**Primary Maker:** Utagawa Hiroshige

**Medium:** Color woodblock print on paper, 20th century facsimile

**Title:** Okitsu, Plate 18 from Famous Places on the Fifty-Three Stations, or The Vertical Tokaido

**Date:** 1855

**Primary Maker:** Utagawa Hiroshige

**Medium:** Color woodblock on paper



**Title:** Off Tsukuda Island in the Eastern Capital, from Thirty-six Views of Mt. Fuji

**Date:** 1858

**Primary Maker:** Utagawa Hiroshige

**Medium:** Multicolor woodblock print



**Title:** Ochanomizu in the Eastern Capital, from Thirty-six Views of Mt. Fuji

**Date:** 1858

**Primary Maker:** Utagawa Hiroshige

**Medium:** Color woodblock on paper (facsimile)

**Title:** Mt. Kan in Kazusa Province, from Thirty-six Views of Mt. Fuji

**Date:** 1858

**Primary Maker:** Utagawa Hiroshige

**Medium:** Color woodblock on paper (facsimile)



**Title:** The Seven Ri Beach in Sagami Province, from Thirty-six Views of Mt. Fuji

**Date:** 1858

**Primary Maker:** Utagawa Hiroshige

**Medium:** Color woodblock on paper (facsimile)



**Title:** The Sea off Satta in Suruga Province, from Thirty-six Views of Mt. Fuji

**Date:** 1858

**Primary Maker:** Utagawa Hiroshige

**Medium:** Color woodblock on paper (facsimile)

**Title:** Ishiyakushi, Plate 45 from Famous Places on the Fifty-Three Stations, or The Vertical Tokaido

**Date:** 1855

**Primary Maker:** Utagawa Hiroshige

**Medium:** Color woodblock on paper

**Title:** Fuchu, Plate 20 from Famous Places on the Fifty-Three Stations, or The Vertical Tokaido

**Date:** 1855

**Primary Maker:** Utagawa Hiroshige

**Medium:** Color woodblock on paper

**Title:** Akasaka, from The Fifty-three Stations of the Tkaid

**Date:** 1832

**Primary Maker:** Utagawa Hiroshige

**Medium:** Woodblock color print



**Title:** Summer Shower at Ohashi Bridge, from One Hundred Views of Edo

**Primary Maker:** Utagawa Hiroshige

**Medium:** Color woodblock on paper (facsimile)



**Title:** Fuji on the left of the Tkaid Road, from Thirty-six Views of Mt. Fuji

**Date:** 1858

**Primary Maker:** Utagawa Hiroshige

**Medium:** Color woodblock on paper

**Title:** Mariko, Plate 21  
from Famous Places on  
the Fifty-Three Stations,  
or The Vertical Tokaido

**Date:** 1855

**Primary Maker:** Utagawa  
Hiroshige

**Medium:** Color woodblock on  
paper



**Title:** Senba Station,  
Plate 32 from the series  
Sixty-Nine Stations of  
the Kisokaido

**Date:** c. 1835-48

**Primary Maker:** Utagawa  
Hiroshige

**Medium:** Color woodblock on  
paper (fascimile)

**Title:** Maizaka, Plate 31  
from Famous Places on  
the Fifty-Three Stations,  
or The Vertical Tokaido

**Date:** 1855

**Primary Maker:** Utagawa  
Hiroshige

**Medium:** Color woodblock on  
paper