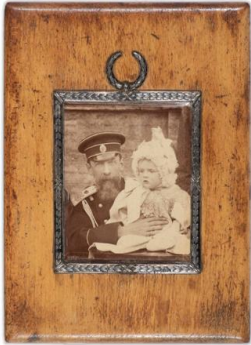


Basic Report



Title: Portrait of Prince Konstantin Esperovich (1843-1920) and his grandson Prince Sergei Sergeevich (1898-1978)

Date: 1898-1899

Primary Maker: Fabergé

Medium: Photographic print, birch wood, silver



Title: Portrait of Prince Sergei Konstantinovich (1867-1951) and his son Prince Sergei Sergeevich (1898-1978)

Date: c. 1906

Primary Maker: Fabergé

Medium: Photographic print; silver, enamel, and ivory



Title: Portrait of Princess Susan Belosselsky-Belozersky (née Susan Tucker Whittier, 1874-1934) and her son Prince Sergei Sergeevich (1898-1978)

Date: 1906

Primary Maker: Fabergé

Medium: Photographic print, silver, enamel, brass, wood



Title: Portrait of Prince Sergei Sergeevich from ca. 1910

Date: c. 1950

Primary Maker: Unknown artist

Medium: Photographic reproduction mounted on board



Title: Portrait of two young ladies (most likely descendants of R. T. Crane)

Date: c. 1900

Primary Maker: Unknown artist

Medium: Photograph, brass, glass



Title: Portrait of Prince Sergei Sergeevich (1898-1978) and his terrier dog (diptych)

Date: c. 1906

Primary Maker: Unknown artist

Medium: Photographic print, leather, silver



Title: Portrait of Prince Sergei Konstantinovich from ca. 1910

Date: c. 1950

Primary Maker: Unknown artist

Medium: Photographic reproduction mounted on board



Title: Portrait of Prince Sergei Sergeevich (1898-1978) with cane and his terrier dog (diptych)

Date: c. 1906

Primary Maker: Unknown artist

Medium: Photographic print, leather, silver